

T.21S. R.8W. W.M.
DOUGLAS COUNTY

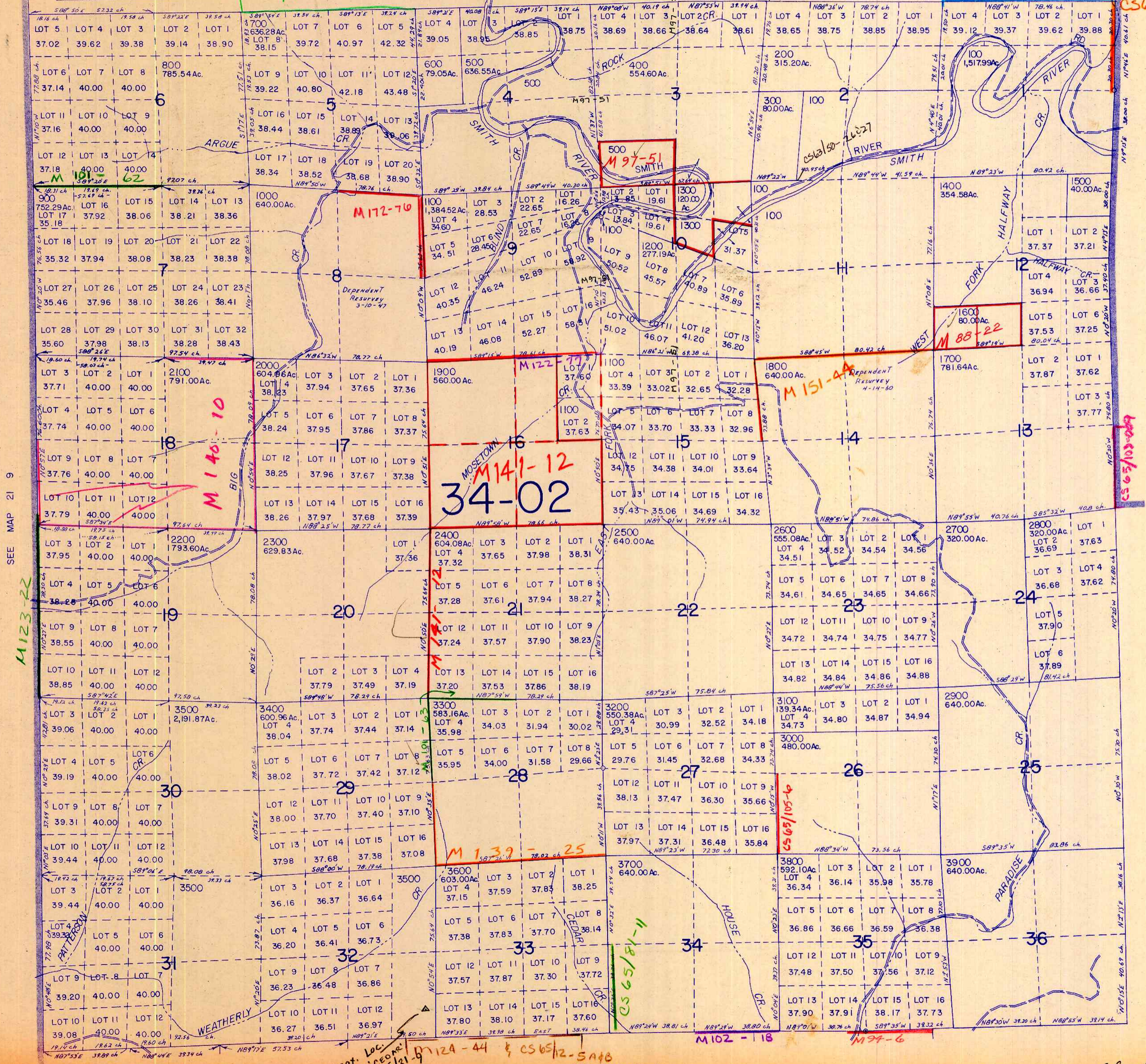
THIS MAP WAS PREPARED FOR
ASSESSMENT PURPOSE ONLY.

1"=2000' SEE MAP 20 8-07-51

M172-31

M1407-42

CS65/84-4



SEE MAP 21 9

SEE MAP 21 7

APPROX. LOC.
GPS STA. CEOM1
SEE CS 65/31-9712A-44 & CS65/12-5A+B
SEE MAP 22 8