

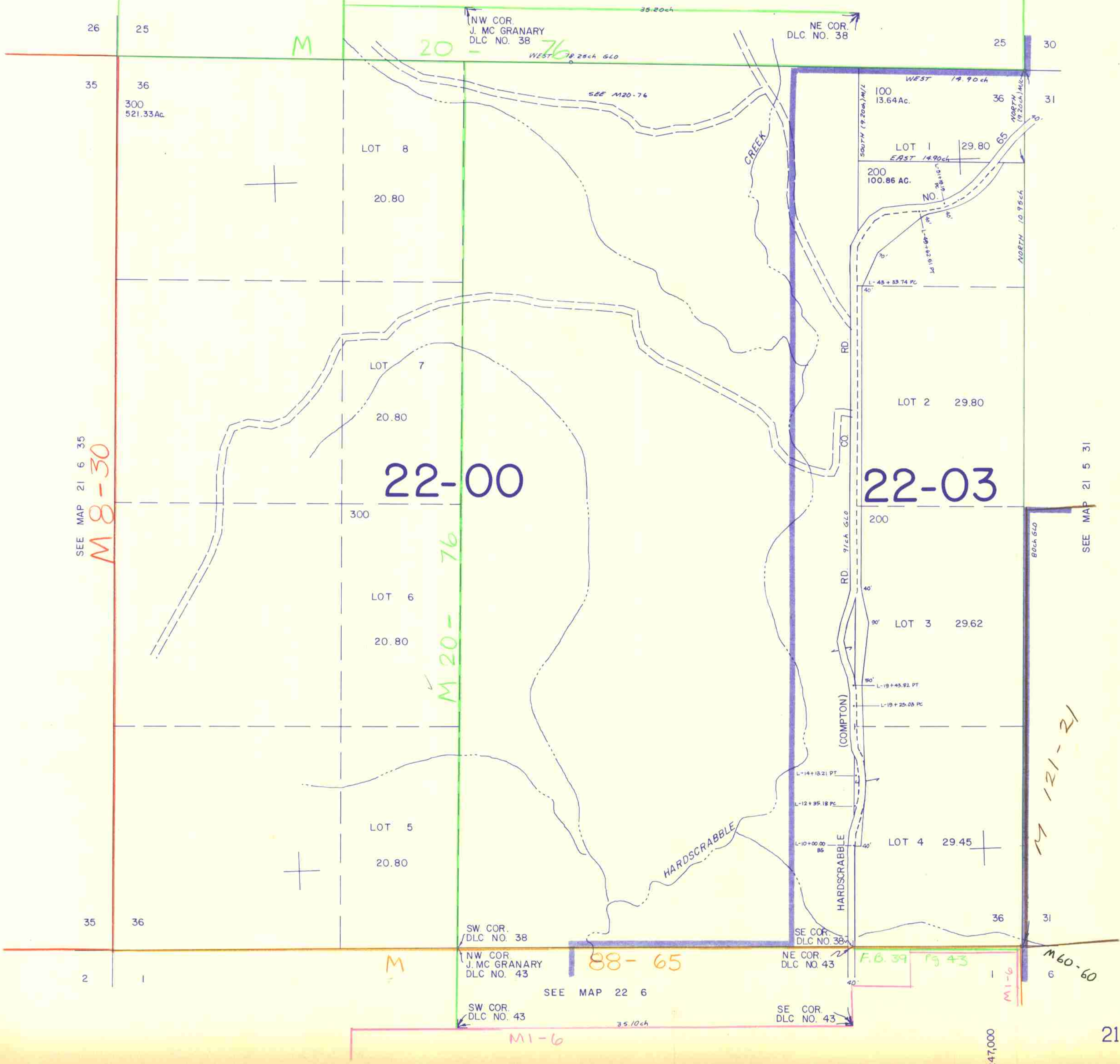
SECTION 36 T.21S. R.6W. W.M.  
DOUGLAS COUNTY

21 6 36

THIS MAP WAS PREPARED FOR  
ASSESSMENT PURPOSE ONLY.

1"=400'

SEE MAP 21 6 25



SEE MAP 21 5 31

SEE MAP 21 6 35  
M 8-30

SEE MAP 22 6

21 6 36

1,247,000

189  
H.D.