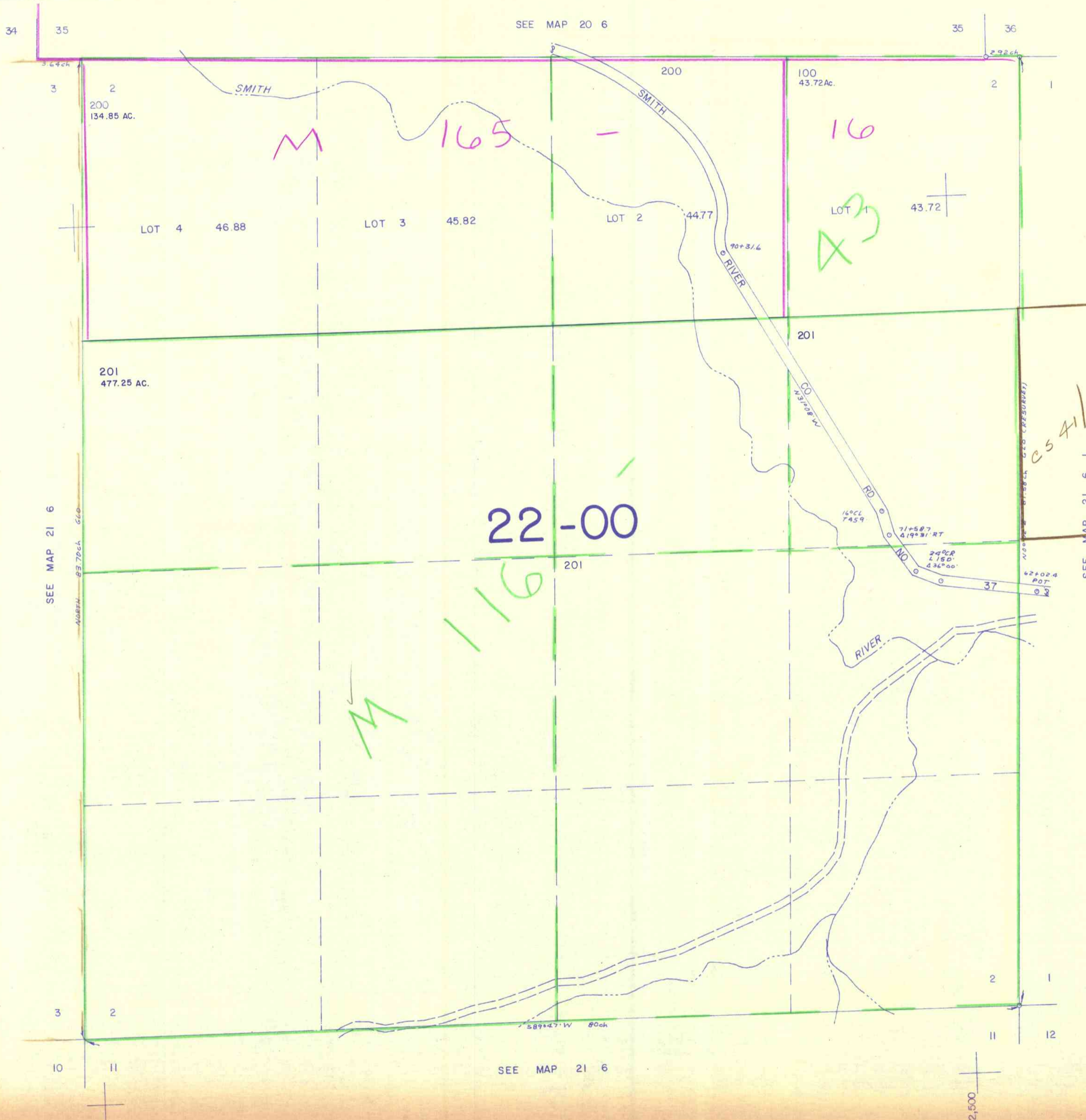


SECTION 2 T.21S. R.6W. W.M.  
DOUGLAS COUNTY

21 6 2

THIS MAP WAS PREPARED FOR  
ASSESSMENT PURPOSE ONLY.

1"=400'



CS 41/118

SEE MAP 21 6 1

SEE MAP 21 6

SEE MAP 20 6

SEE MAP 21 6

21 6 2

777,500

1/90