

SECTION 31 T.21S. R.5W. W.M.
DOUGLAS COUNTY

21 5 31

THIS MAP WAS PREPARED FOR
ASSESSMENT PURPOSE ONLY.

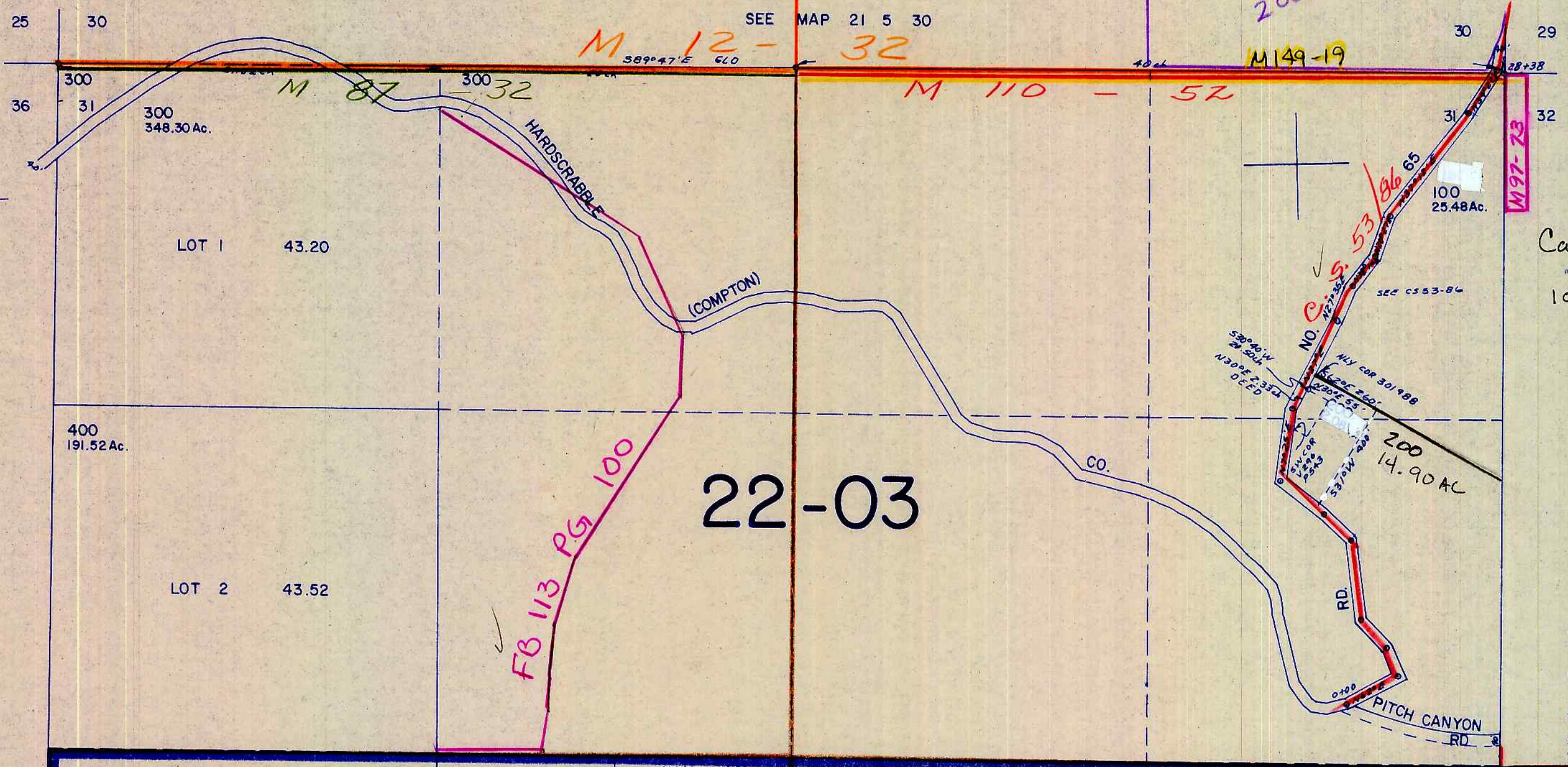
1"=400'

SEE MAP 21 5 30

M 12 - 32

2007-0006

M 149-19



Cancelled Nos
101 100A1

SEE MAP 21 6 36

SEE MAP 21 5 32

SEE MAP 21 97-73

22-00

2022-0039 A-C
UNSURV

M 114 - 60

SEE MAP 22 5

M 153-31

751,000

21 5 31

1,252,000

7/23/88