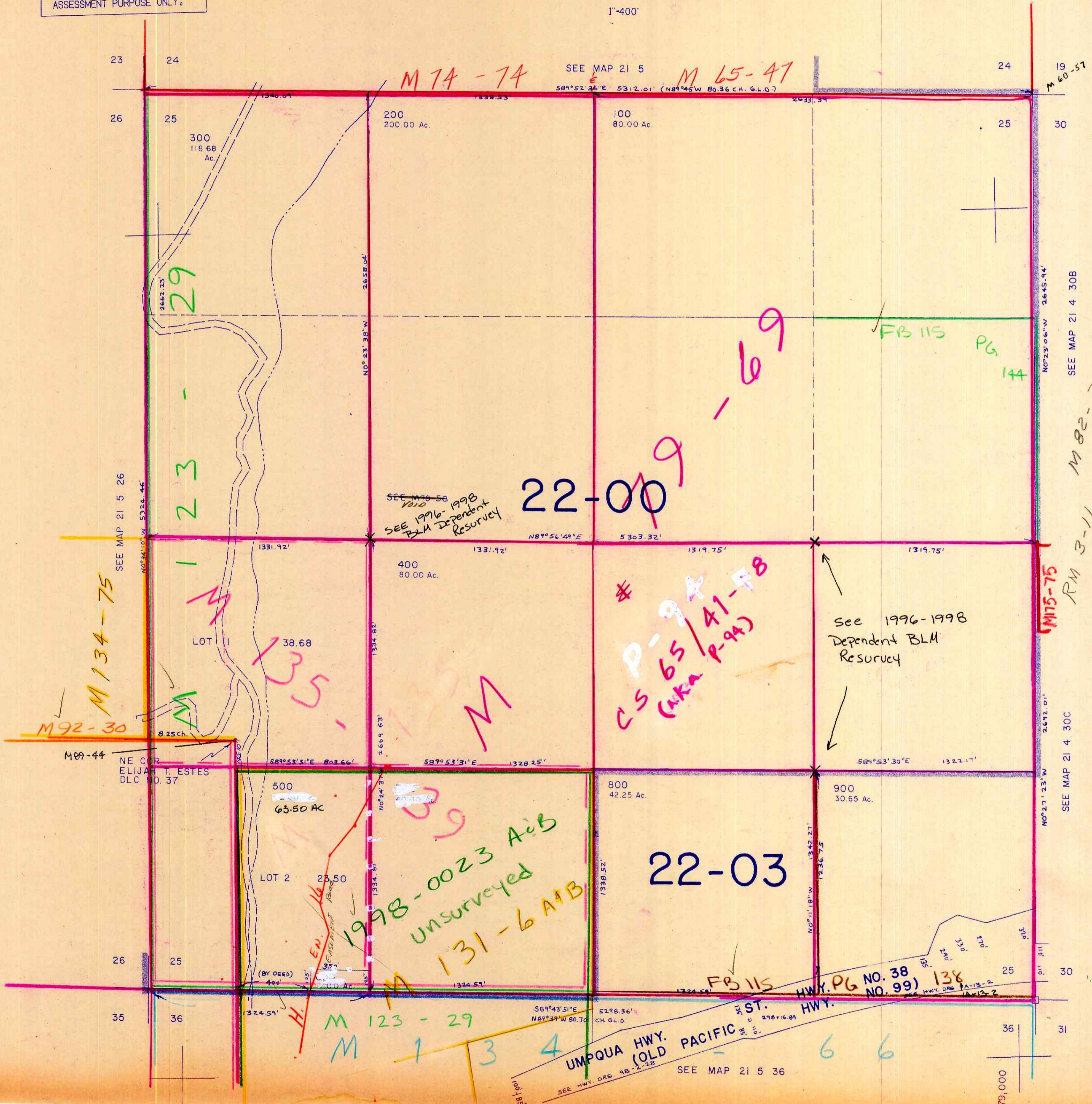


SECTION 25 T.21S. R.5W. W.M.  
DOUGLAS COUNTY

21 5 25

THIS MAP WAS PREPARED FOR  
ASSESSMENT PURPOSE ONLY.

1"=400'



Cancelled #s  
600  
700

760,000

RM 3-11  
M 107-75  
M 102-17  
M 100-56  
M 79-54

21 5 25

7/23/04