

THIS MAP WAS PREPARED FOR ASSESSMENT PURPOSE ONLY.

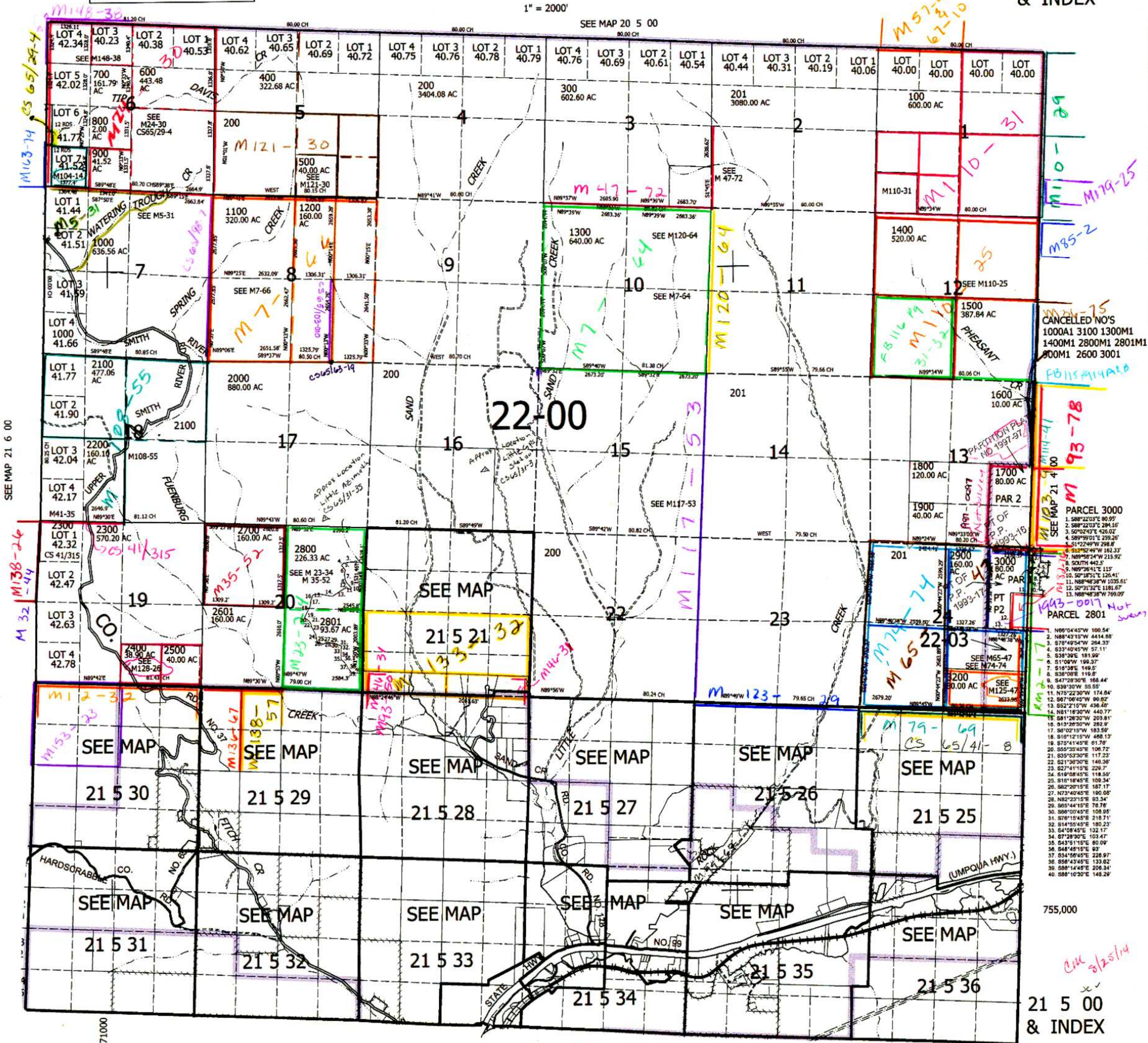
# T21S. R.5W. W.M. DOUGLAS COUNTY

REVISED ON 6-26-14

## 21 5 00 & INDEX

1" = 2000'

SEE MAP 20 5 00



CANCELLED NO'S  
 1000A1 3100 1300M1  
 1400M1 2800M1 2801M1  
 300M1 2600 3001

PARCEL 3000  
 1. S89°22'03"E 80.99'  
 2. S89°22'03"E 284.16'  
 3. S0°02'43"E 426.02'  
 4. S89°59'01"E 259.26'  
 5. S1°22'49"W 298.8'  
 6. S12°52'49"W 162.33'  
 7. N89°58'24"W 215.92'  
 8. S0°02'43"E 426.02'  
 9. N89°36'41"E 115'  
 10. S0°18'51"E 126.41'  
 11. N89°48'38"W 1035.61'  
 12. S0°31'32"E 1191.67'  
 13. N89°59'01"E 259.26'

1. N89°04'45"W 100.54'  
 2. N88°43'15"W 4414.68'  
 3. S78°49'54"W 284.33'  
 4. S33°40'45"W 57.11'  
 5. S38°39'E 181.99'  
 6. S1°09'W 194.37'  
 7. S18°38'E 149.6'  
 8. S38°08'E 119.8'  
 9. S47°28'30"E 166.44'  
 10. S30°30'W 55.55'  
 11. N75°22'30"W 174.84'  
 12. S67°00'45"W 80.82'  
 13. S52°2'15"W 436.48'  
 14. N81°18'30"W 440.77'  
 15. S81°26'30"W 205.81'  
 16. S14°55'45"E 180.23'  
 17. S6°02'15"W 183.59'  
 18. S10°12'15"W 468.13'  
 19. S75°41'45"E 61.78'  
 20. S65°35'45"E 106.72'  
 21. S35°53'30"E 117.23'  
 22. S21°38'30"E 146.38'  
 23. S27°41'15"E 229.7'  
 24. S19°08'45"E 118.55'  
 25. S16°18'45"E 109.34'  
 26. S6°20'15"E 167.17'  
 27. N73°40'45"E 190.06'  
 28. N82°23'15"E 83.34'  
 29. S65°44'15"E 78.76'  
 30. S86°00'45"E 108.95'  
 31. S78°15'45"E 218.71'  
 32. S14°55'45"E 180.23'  
 33. S4°08'45"E 132.17'  
 34. S7°28'30"E 103.47'  
 35. S43°51'15"E 80.09'  
 36. S48°48'15"E 93'  
 37. S34°56'45"E 228.97'  
 38. S58°43'45"E 133.82'  
 39. S88°14'45"E 206.34'  
 40. S88°10'30"E 148.29'

755,000

SEE MAP 21 4 00

## 21 5 00 & INDEX

SEE MAP 22 5 00

SEE MAP 21 6 00

4,171,000