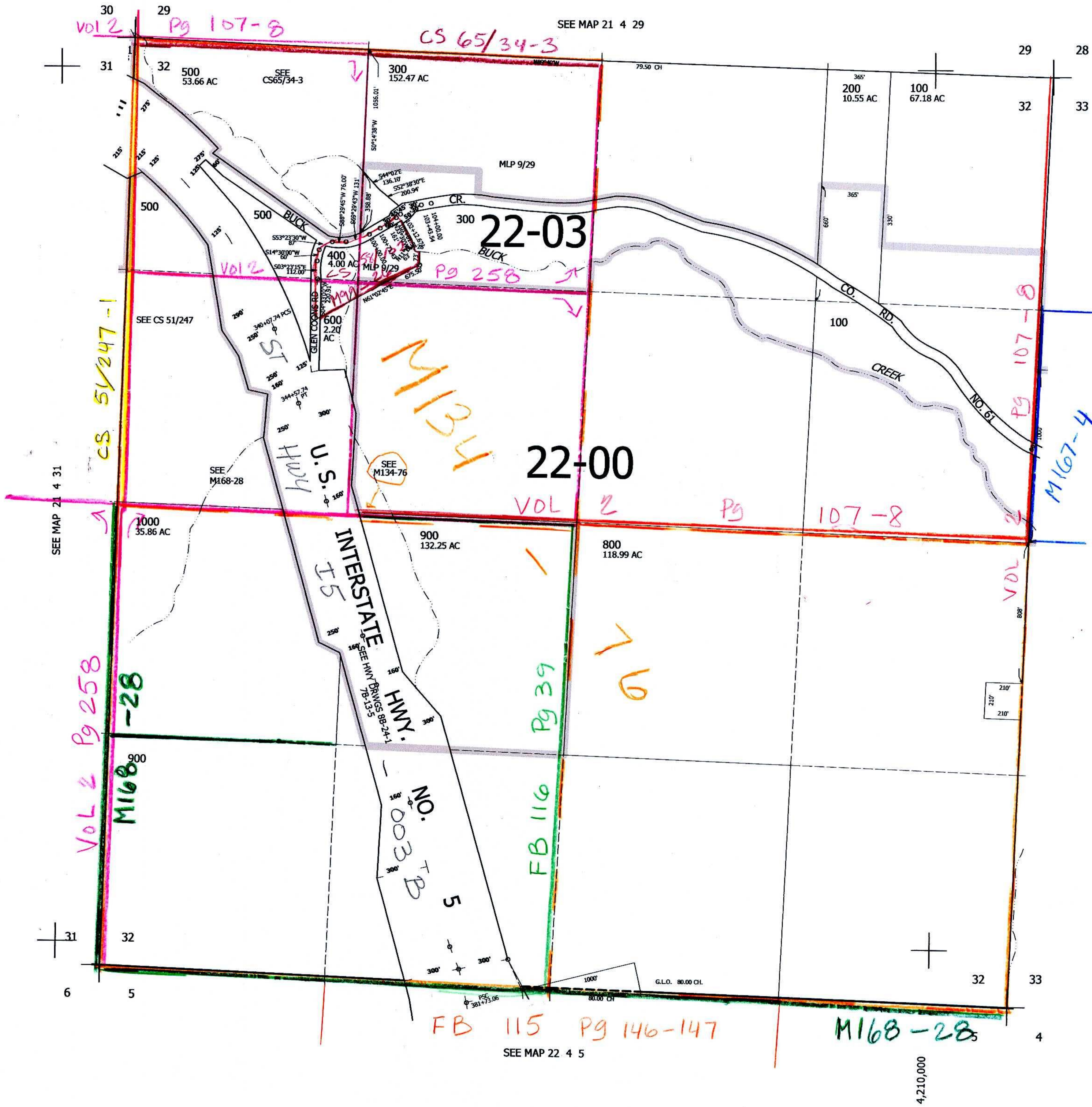


THIS MAP WAS PREPARED FOR ASSESSMENT PURPOSE ONLY.

SEC.32 T21S. R.4W. W.M.
DOUGLAS COUNTY
1" = 400'

REVISED ON
12-6-18

21 4 32



CANCELLED NO'S
700 301

SEE MAP 21 4 33

750,000

8/16/18 BR
VOL

21 4 32