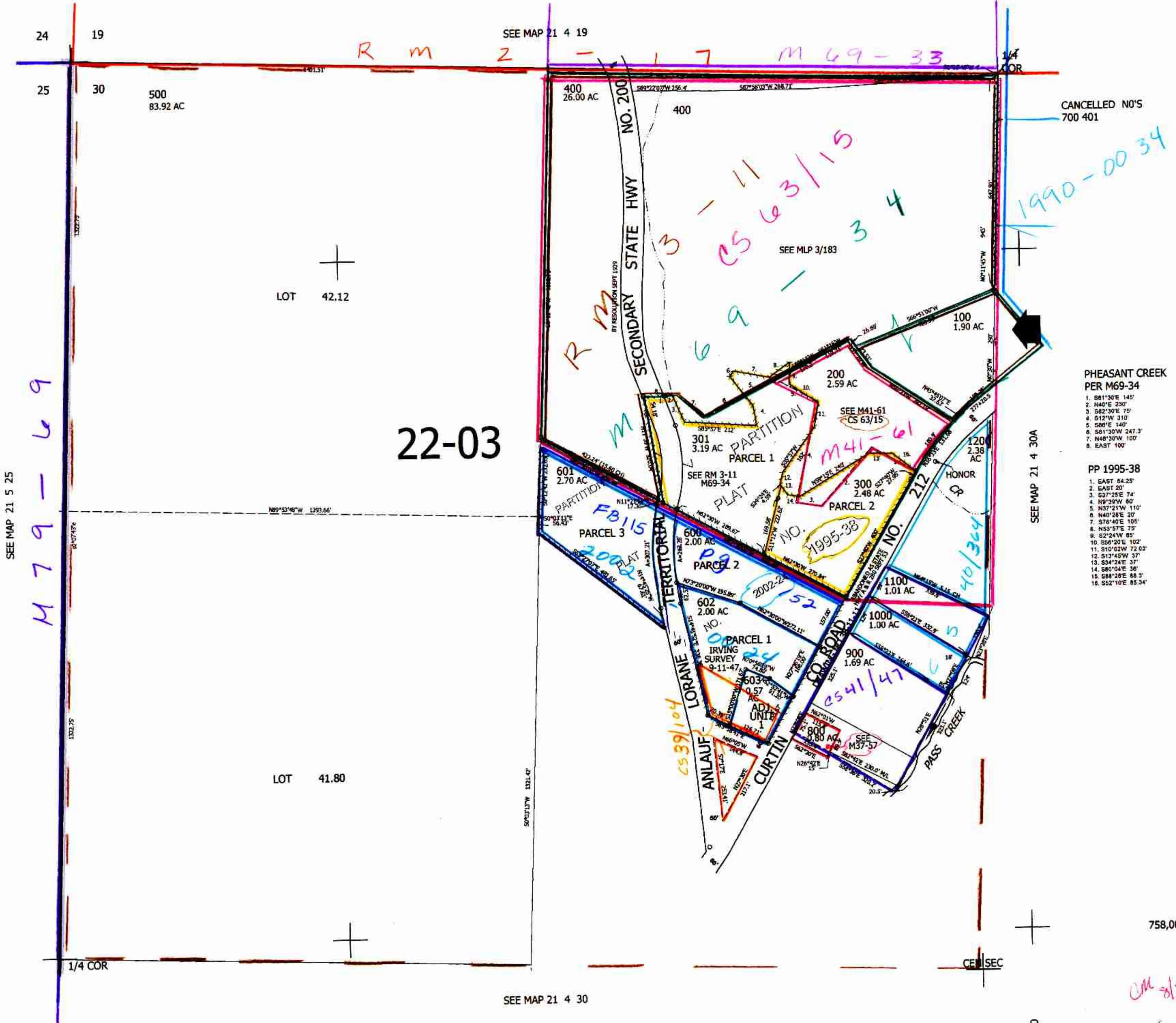


THIS MAP WAS PREPARED FOR
ASSESSMENT PURPOSE ONLY.

NW1/4 SEC.30 T21S. R.4W. W.M.
DOUGLAS COUNTY
1" = 200'

REVISED ON
6-25-14

21 4 30B



CANCELLED NO'S
700 401

PHEASANT CREEK
PER M69-34

- 1. S81°30'E 145'
- 2. N40°E 230'
- 3. S37°30'E 75'
- 4. S12°W 310'
- 5. S88°E 140'
- 6. S81°30'W 247.3'
- 7. N40°30'W 100'
- 8. EAST 100'

PP 1995-38

- 1. EAST 84.25'
- 2. EAST 20'
- 3. S37°25'E 74'
- 4. N9°39'W 80'
- 5. N37°21'W 110'
- 6. N40°28'E 20'
- 7. S78°40'E 105'
- 8. N55°57'E 75'
- 9. S2°24'W 85'
- 10. S56°20'E 102'
- 11. S10°02'W 72.03'
- 12. S13°45'W 37'
- 13. S34°24'E 37'
- 14. S80°04'E 36'
- 15. S88°28'E 88.3'
- 16. S52°10'E 85.34'

SEE MAP 21 4 30A

758,000

CM 2/25/14

✓

21 4 30B

4,203,000

SEE MAP 21 4 30

SEE MAP 21 5 25

M 79 - 69

22-03

LOT 42.12

LOT 41.80

24 19

25 30

SEE MAP 21 4 19

1/4 COR

CEN SEC

1/4 COR