

THIS MAP WAS PREPARED FOR ASSESSMENT PURPOSE ONLY

SEC. 29 T.21S. R. 4W W.M.

21 4 29

DOUGLAS COUNTY

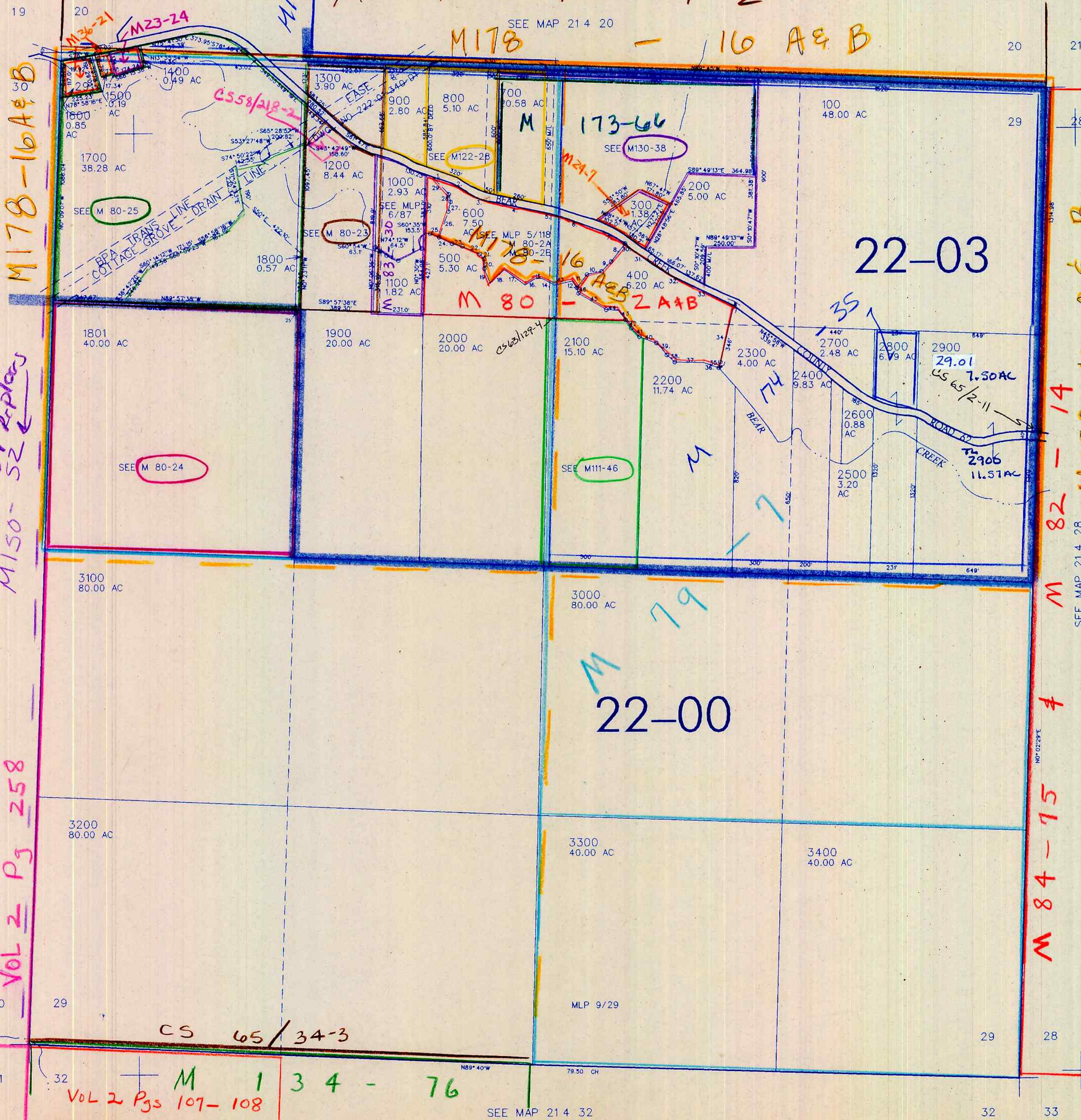
1" = 400'

REVISED ON 12-4-98

M 1 3 4 - 4 2

M178 - 16 A & B

SEE MAP 21 4 20



CANCELED NO'S 201

M 82-14
SEE MAP 21 4 28
M 178-16 A & B

M 84-75
SEE MAP 21 4 28

1. S68° 55' 57" E 81.82'
2. S66° 14' 17" E 170.18'
3. S72° 28' 12" E 147.41'
4. S81° 23' 48" E 226.05'
5. S77° 08' 29" E 80.42'
6. S73° 53' 10" E 140.03'
7. S26° 34' 14" E 89.33'
8. S34° 28' 19" W 116.89'
9. S41° 58' 17" W 76.38'
10. S75° 33' 12" W 68.15'
11. S36° 05' 58" W 103.88'
12. N2° 12' 57" W 84.08'
13. S68° 24' 58" W 97.86'
14. N63° 07' 49" W 84.08'
15. S85° 14' 11" W 24.08'
16. S58° 20' 27" W 70.49'
17. N51° 48' 57" W 125.21'
18. S46° 30' 27" W 107.52'
19. N22° 11' 25" W 82.05'
20. N3° 28' 01" W 50.09'
21. N45° 00' 00" W 36.78'
22. N67° 03' 33" W 86.82'
23. N76° 48' 05" W 59.11'
24. N65° 28' 12" W 122.72'
25. N77° 22' 53" W 34.46'
26. S21° 25' 30" W 152.44'
27. S8° 58' 04" W 44.50'
28. S25° 45' 35" E 49.16'
29. S44° 25' 12" E 132.68'
30. S88° 52' 30" E 40.58'
31. S55° 21' 39" E 119.47'
32. S80° 28' 35" E 172.98'
33. S85° 35' 31" E 332.16'
34. S12° 30' 00" W 308.39'
35. S12° 30' 00" W 20.0'
36. N78° 01' 58" W 88.54'
37. S88° 49' 51" W 147.03'
38. N51° 57' 11" W 58.41'
39. N36° 52' 12" W 75.00'
40. N73° 34' 40" W 58.04'
41. N46° 44' 09" W 70.04'
42. N58° 40' 28" W 50.18'
43. N38° 40' 28" W 87.02'
44. S88° 15' 51" W 86.03'
45. N11° 36' 25" W 188.24'
46. N27° 12' 58" W 25.18'

SEE MAP 21 4 30A
M 150-64 replaces
M 150-52

SEE MAP 21 4 30
VOL 2 Pg 258

M 1 3 4 - 76
VOL 2 Pgs 107-108

SEE MAP 21 4 32

4.211,000

21 4 29

140 1/99