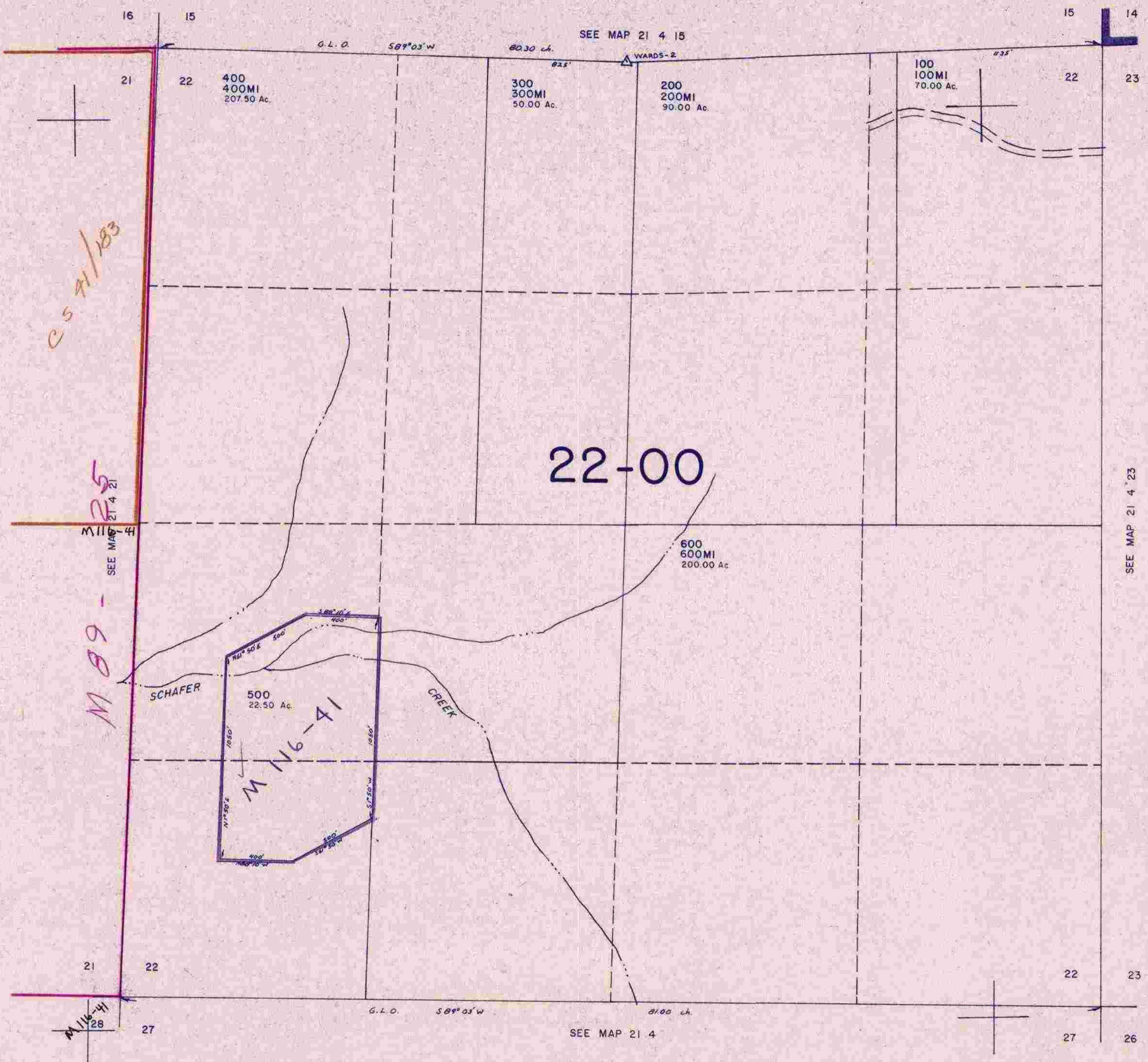


THIS MAP WAS PREPARED FOR ASSESSMENT PURPOSE ONLY.

SECTION 22 T.21S. R.4W. W.M.  
DOUGLAS COUNTY  
1" = 400'

21 4 22



*C.S. 7/1/83*

*M 25 -*  
SEE MAP 21 4 21

*M 89 -*

*M 116-41*

769,000

21 4 22

*7/13/83*