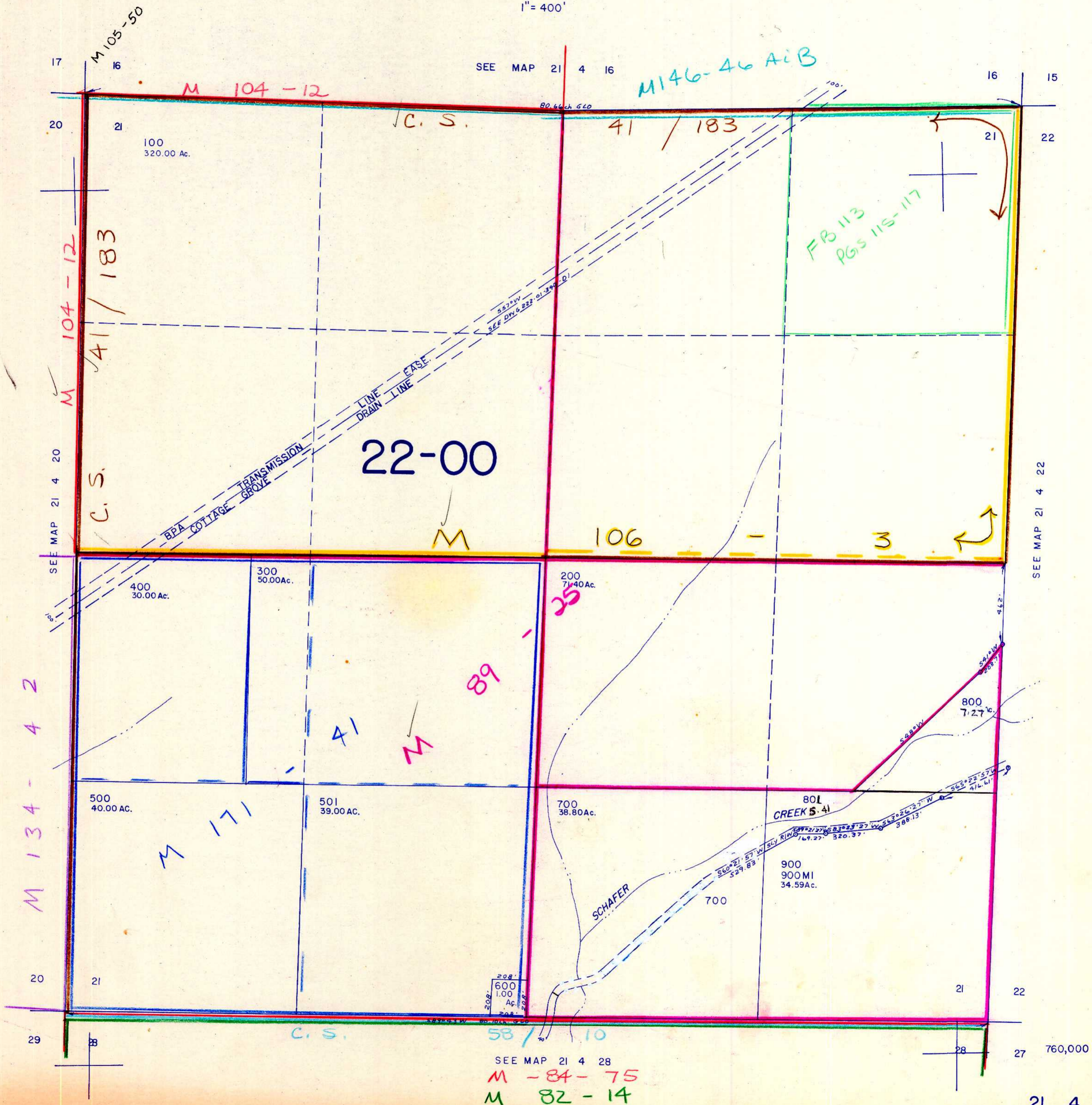


THIS MAP WAS PREPARED FOR ASSESSMENT PURPOSE ONLY.

SECTION 21 T.21 S. R. 4 W. W.M.
DOUGLAS COUNTY

21 4 21

1" = 400'



SEE MAP 21 4 22

SEE MAP 21 4 28

M -84-75
M 82-14

21 4 21

1,295,000