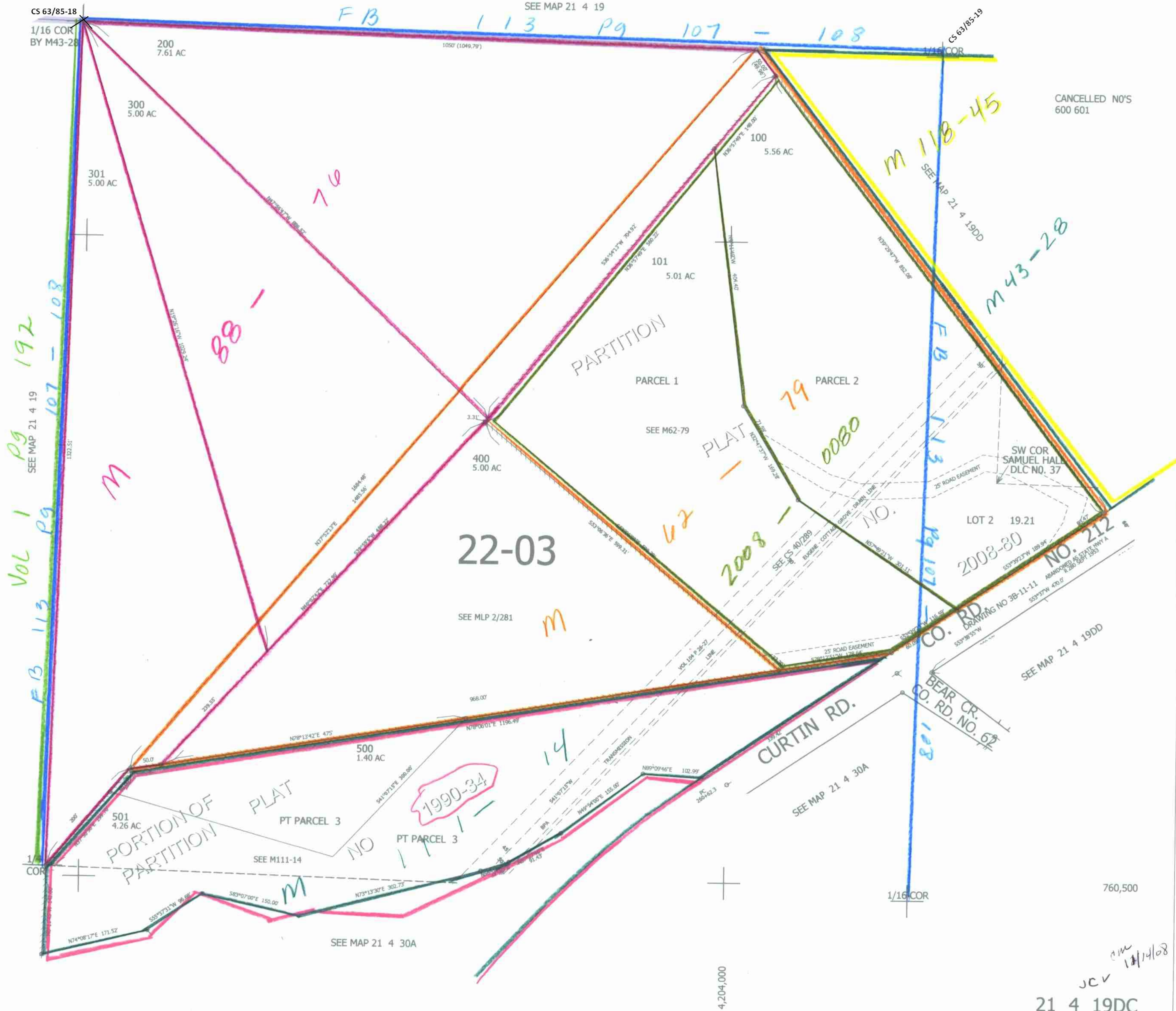


THIS MAP WAS PREPARED FOR ASSESSMENT PURPOSE ONLY.

SW1/4 SE1/4 SEC.19 T21S. R.4W. W.M.
DOUGLAS COUNTY
1" = 100'

REVISED ON
11-14-08

21 4 19DC



CANCELLED NO'S
600 601

760,500

JCV
11/14/08

21 4 19DC