

THIS MAP WAS PREPARED FOR
ASSESSMENT PURPOSE ONLY.

SECTION 10 T.21S. R.4W. W.M.
DOUGLAS COUNTY

21 4 10

1" = 400'

SEE MAP 21 4

S89°17'W

4 3 3 2

9 10 100
513.63 Ac.

10 11

14

22-00

72

SEE MAP 21 4

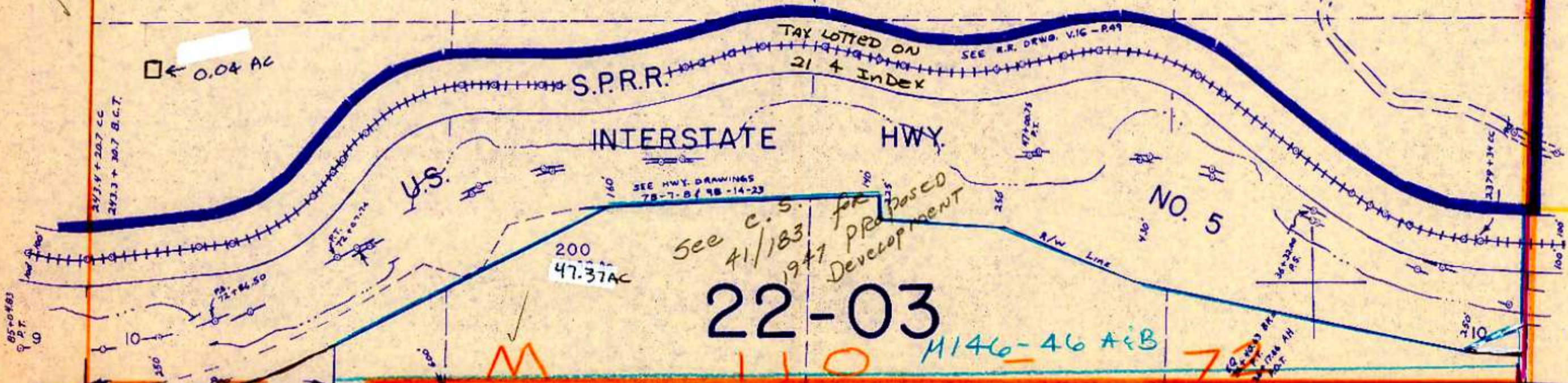
SEE MAP 21 4 11

M 102

M 110 -
M 145-67

0.04 AC

SEE MAP 21 4



22-03

771,000

SEE MAP 21 4 15

M 182-67

1,300,000

21 4 10

7183R