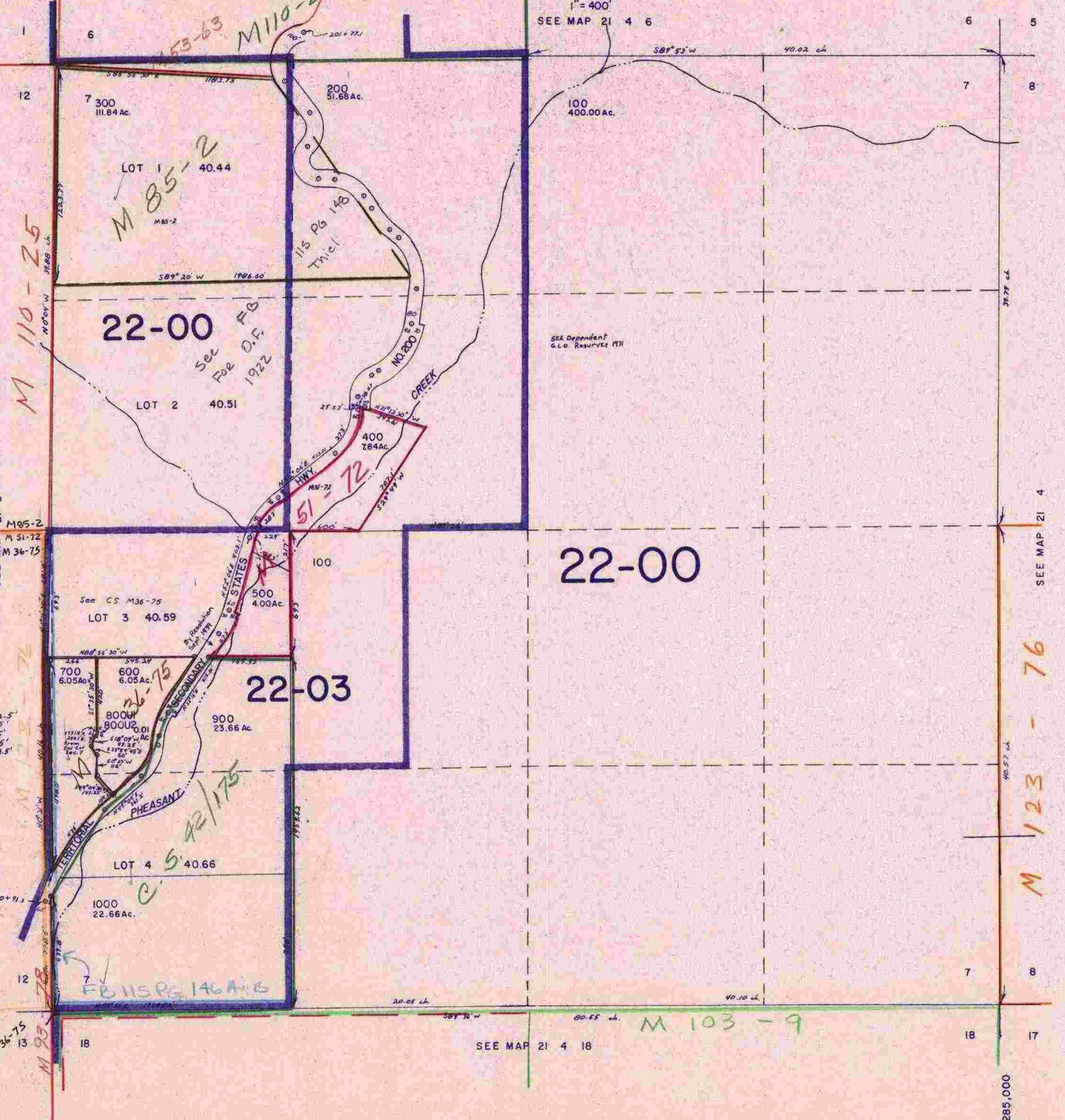


THIS MAP WAS PREPARED FOR ASSESSMENT PURPOSE ONLY.

SECTION 7 T.21S. R.4 W.W.M.
DOUGLAS COUNTY

21 4 7

1" = 400'
SEE MAP 21 4 6



- 1. N 71° 51' W 12.5'
- 2. S 18° 09' W 25'
- 3. S 71° 51' E 25'
- 4. N 18° 09' E 25'
- 5. N 71° 51' W 12.5'

SEE MAP 21 4 18

1,285,000

21 4 7

7/83