

THIS MAP WAS PREPARED FOR ASSESSMENT PURPOSE ONLY.

T21S. R.4W. W.M.
DOUGLAS COUNTY

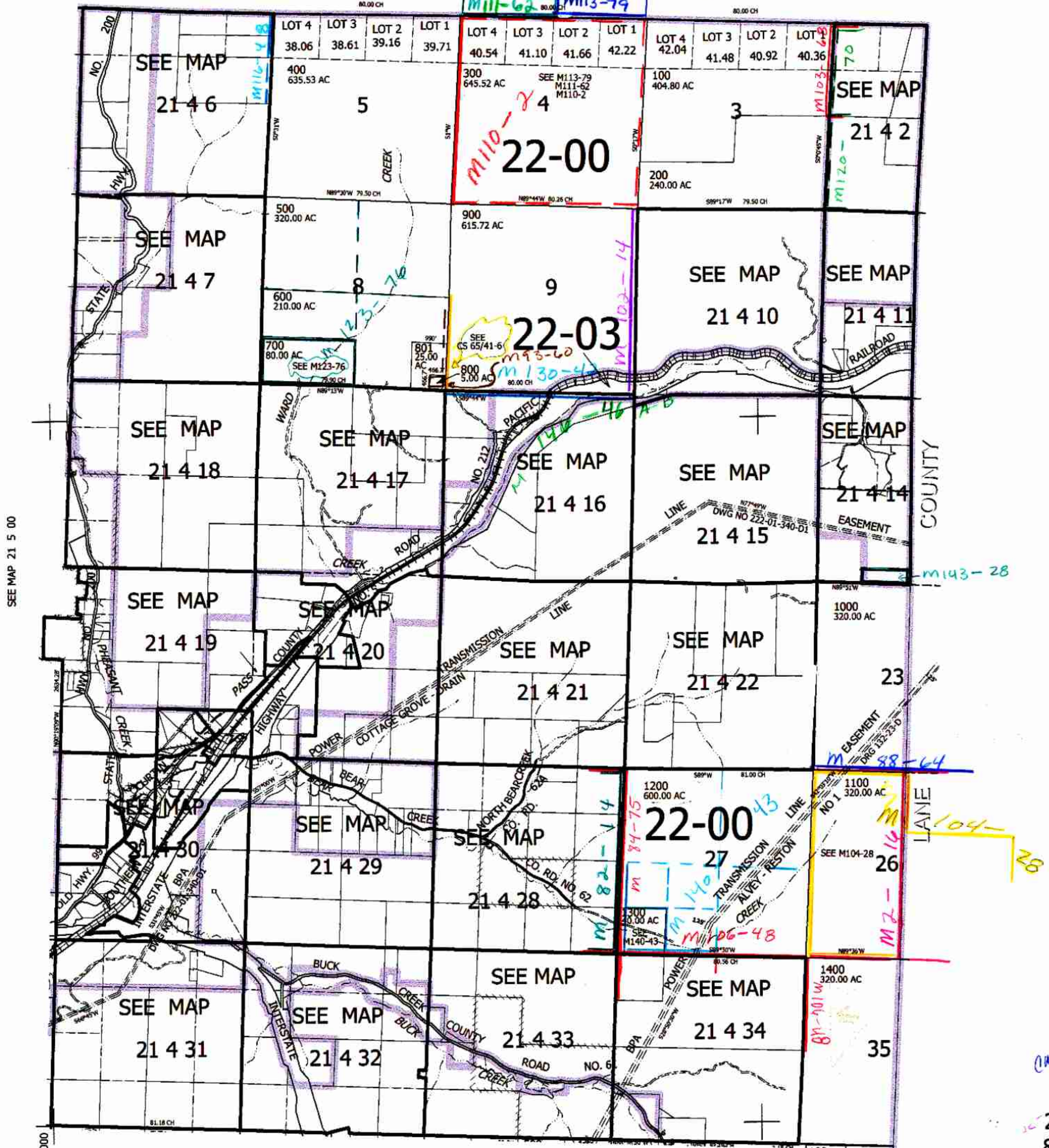
REVISED ON
6-26-14

21 4 00
& INDEX

LANE

1" = 2000'

COUNTY



SEE MAP 21 5 00

770,000

4,200,000

SEE MAP 22 4 00

AM 8/25/14

21 4 00
& INDEX