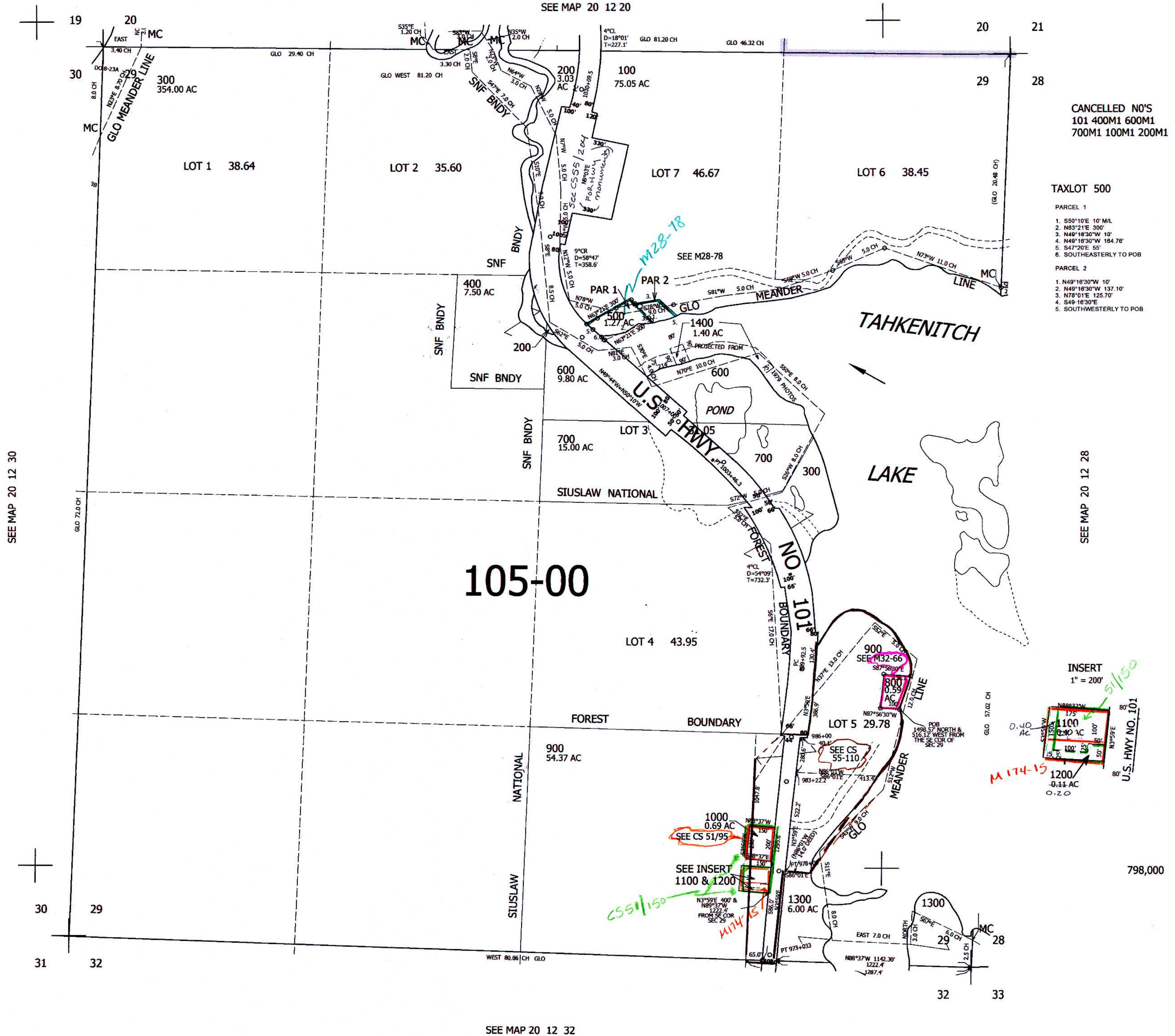


THIS MAP WAS PREPARED FOR ASSESSMENT PURPOSE ONLY.

SEC.29 T20S. R.12W. W.M.  
DOUGLAS COUNTY  
1" = 400'

REVISED ON  
2-4-13

20 12 29



CANCELLED NO'S  
101 400M1 600M1  
700M1 100M1 200M1

TAXLOT 500

- PARCEL 1
1. S50°10'E 10' M/L
  2. N83°21'E 300'
  3. N49°16'30"W 40'
  4. N49°16'30"W 184.78'
  5. S47°20'E 55'
  6. SOUTHEASTERLY TO POB
- PARCEL 2
1. N49°16'30"W 10'
  2. N49°16'30"W 137.10'
  3. N78°01'E 125.70'
  4. S49°16'30"E
  5. SOUTHWESTERLY TO POB

SEE MAP 20 12 28

INSERT  
1" = 200'



798,000

SEE MAP 20 12 32

3,959,000

20 12 29