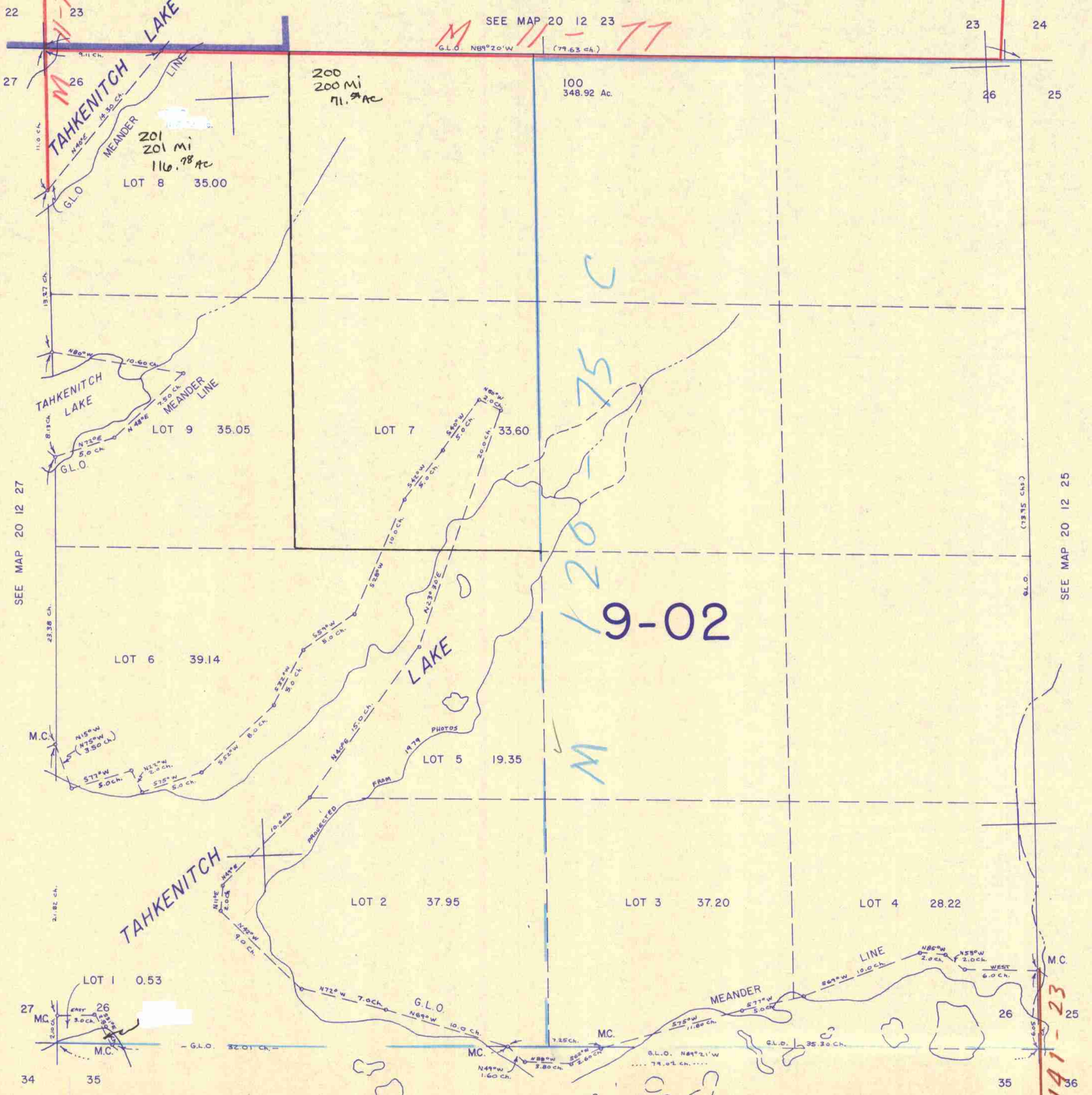


SECTION 26 T.20S. R.12W. W.M.
DOUGLAS COUNTY

20 12 26

1" = 400'

THIS MAP WAS PREPARED FOR
ASSESSMENT PURPOSE ONLY.



SEE MAP 20 12 23
G.L.O. N89°20'W (79.63 ch.)

200
200 Mi
71.9 Ac

100
348.92 Ac.

201
201 Mi
116.78 Ac
LOT 8 35.00

LOT 9 35.05

LOT 7 33.60

LOT 6 39.14

LOT 5 19.35

LOT 2 37.95

LOT 3 37.20

LOT 4 28.22

LOT 1 0.53

SEE MAP 20 12 35

M 191-23
20 12 26
3/8/78

798,000

1,054,000