

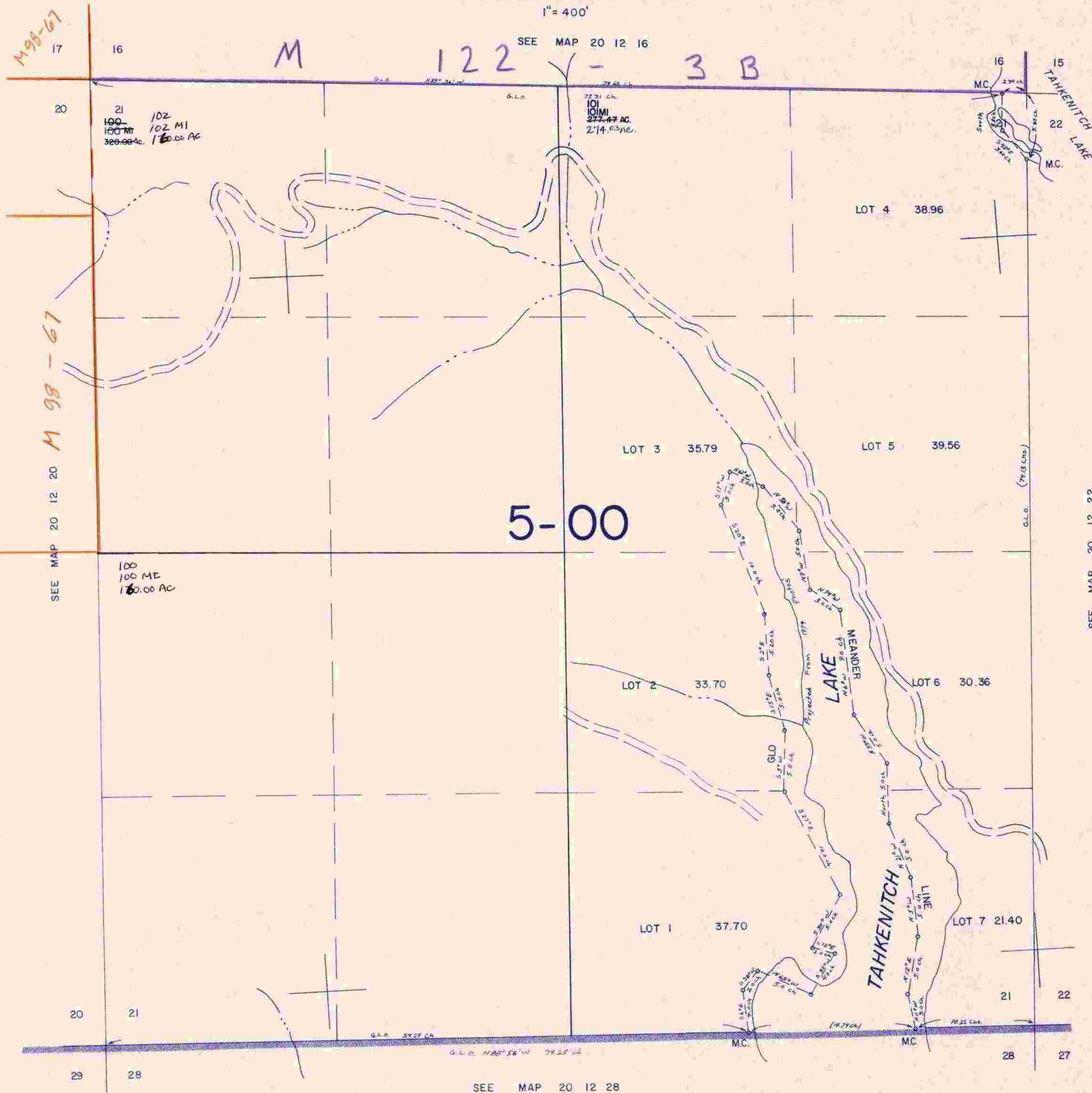
THIS MAP WAS PREPARED FOR  
ASSESSMENT PURPOSE ONLY.

SECTION 21 T.20S. R.12W. W.M.  
DOUGLAS COUNTY

REVISED ON  
11-24-92

20 12 21

1" = 400'



M 98-67

SEE MAP 20 12 20 M 98-61

M 122 - 3 B

5-00

SEE MAP 20 12 22

SEE MAP 20 12 28

20 12 21

1102 AC

0.44,000

803,000