

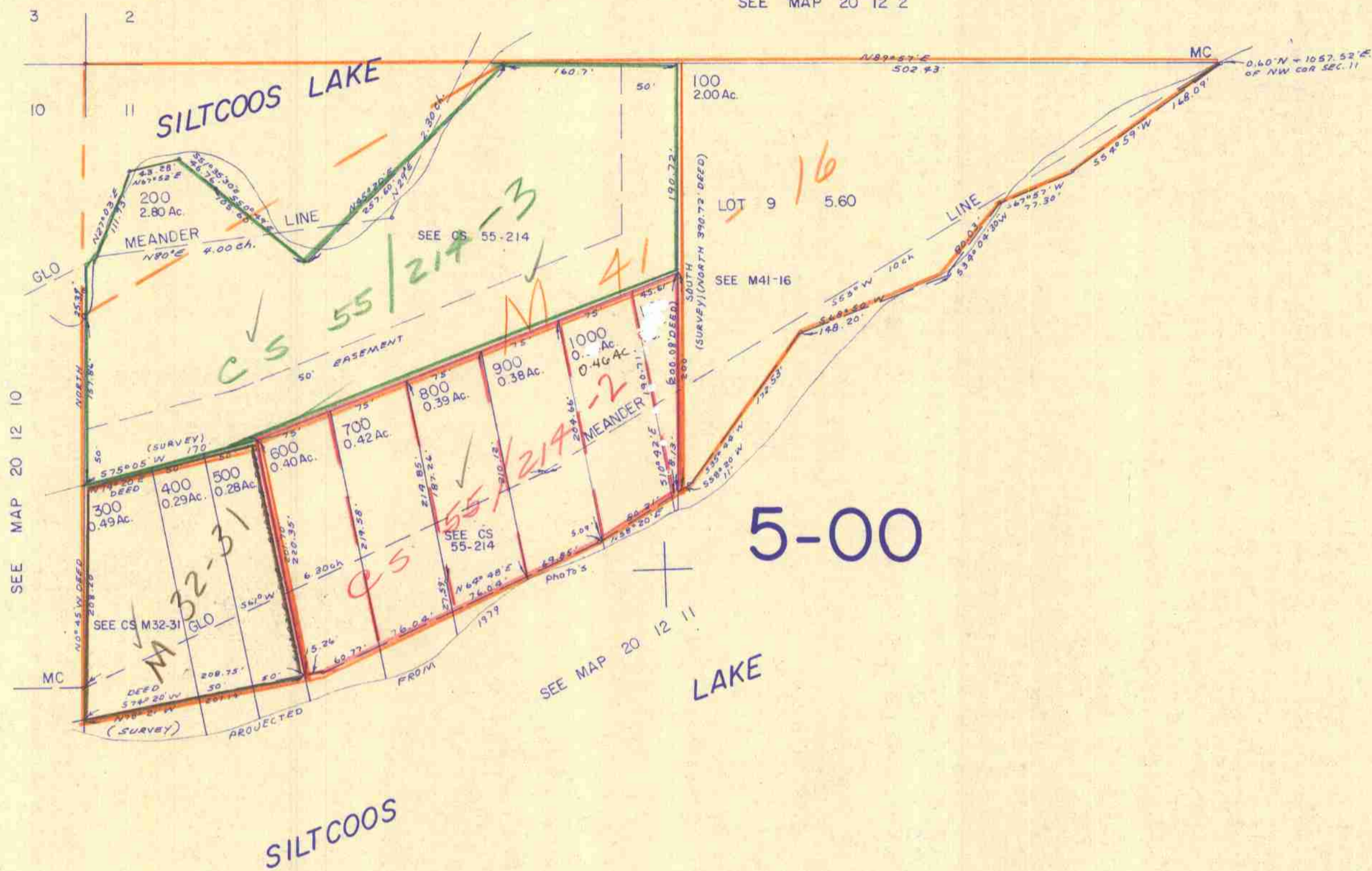
THIS MAP WAS PREPARED FOR
ASSESSMENT PURPOSE ONLY.

NW/4 NW/4 SEC. 11 T.20S. R.12W.W.M.
DOUGLAS COUNTY

20 12 11BB

1" = 100'

SEE MAP 20 12 2



APPROX.
1/16 COR.

APPROX.
1/16 COR.

1,050,000

817,000
20 12 11BB

3/8/78