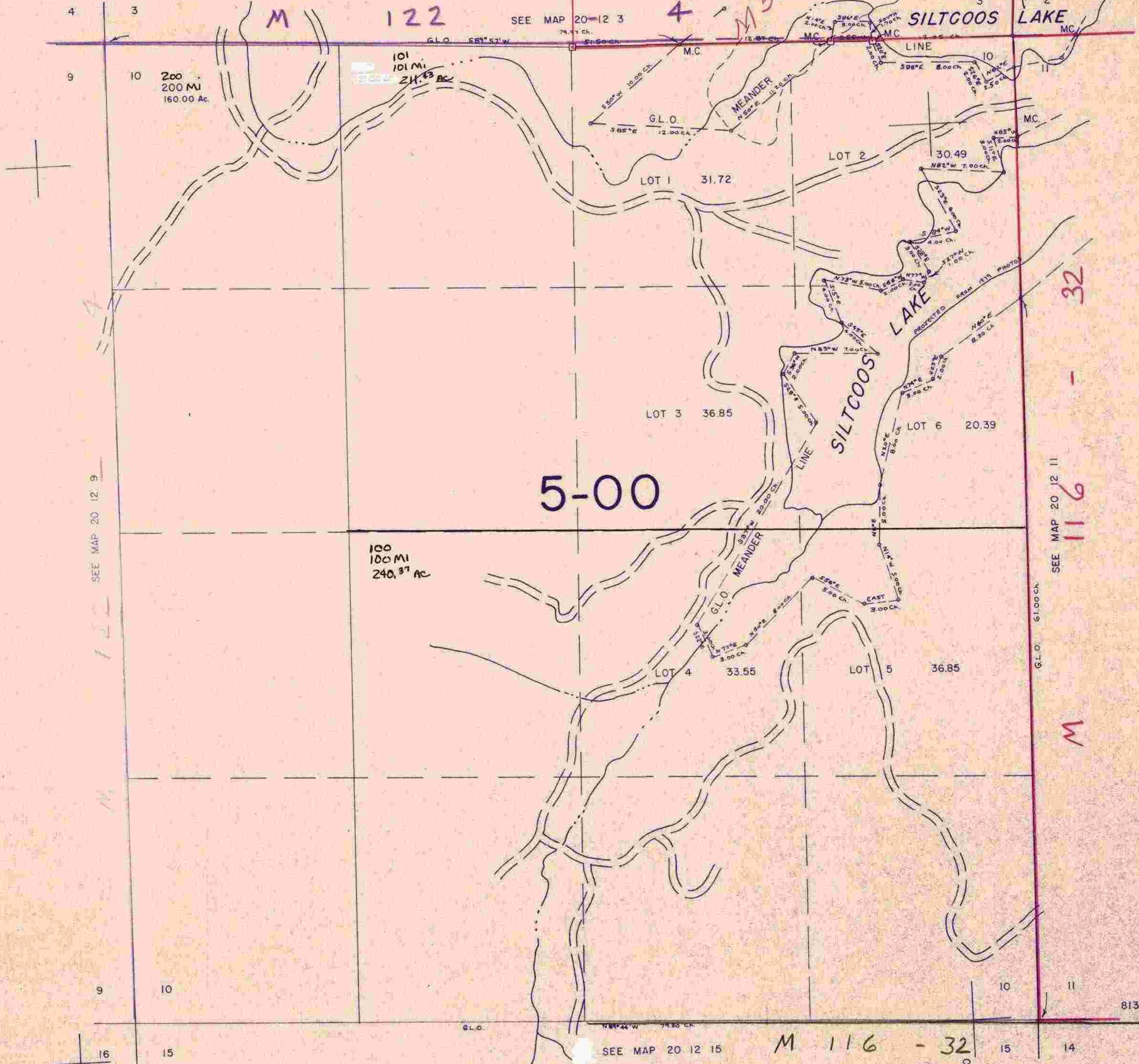


SECTION 10 T.20S. R.12W. W.M.
DOUGLAS COUNTY

1" = 400'

THIS MAP WAS PREPARED FOR
ASSESSMENT PURPOSE ONLY.



SEE MAP 20 12 9

SEE MAP 20-12 3

SEE MAP 20 12 11

SEE MAP 20 12 15

M 116 - 32

3/8/31