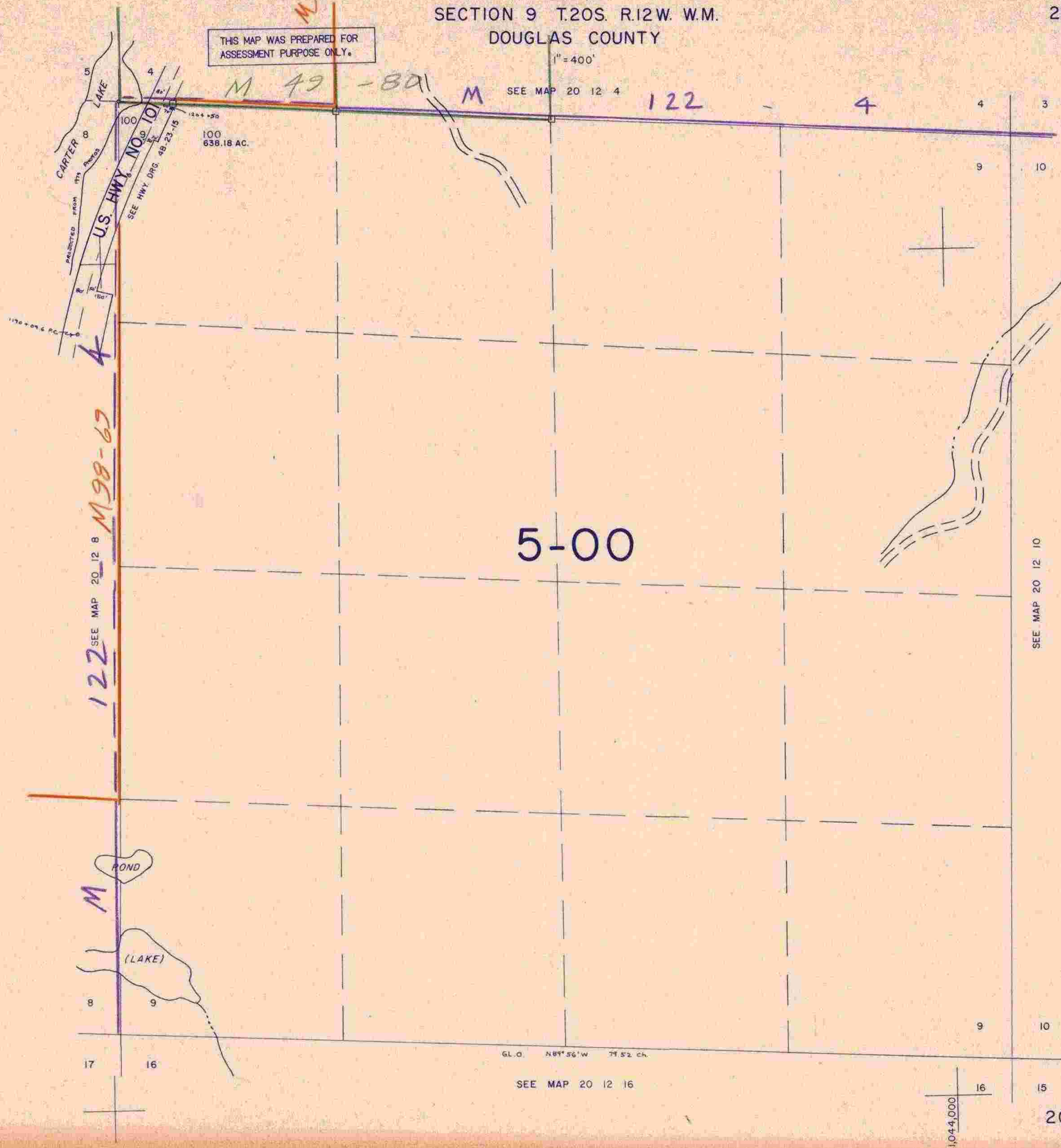


SECTION 9 T.20S. R.12W. W.M.
DOUGLAS COUNTY

20 12 9

THIS MAP WAS PREPARED FOR
ASSESSMENT PURPOSE ONLY.

1" = 400'



GL. O N89°56'W 79.52 ch.

SEE MAP 20 12 16

1,044,000

16 15 813,000

20 12 9

3/13/78