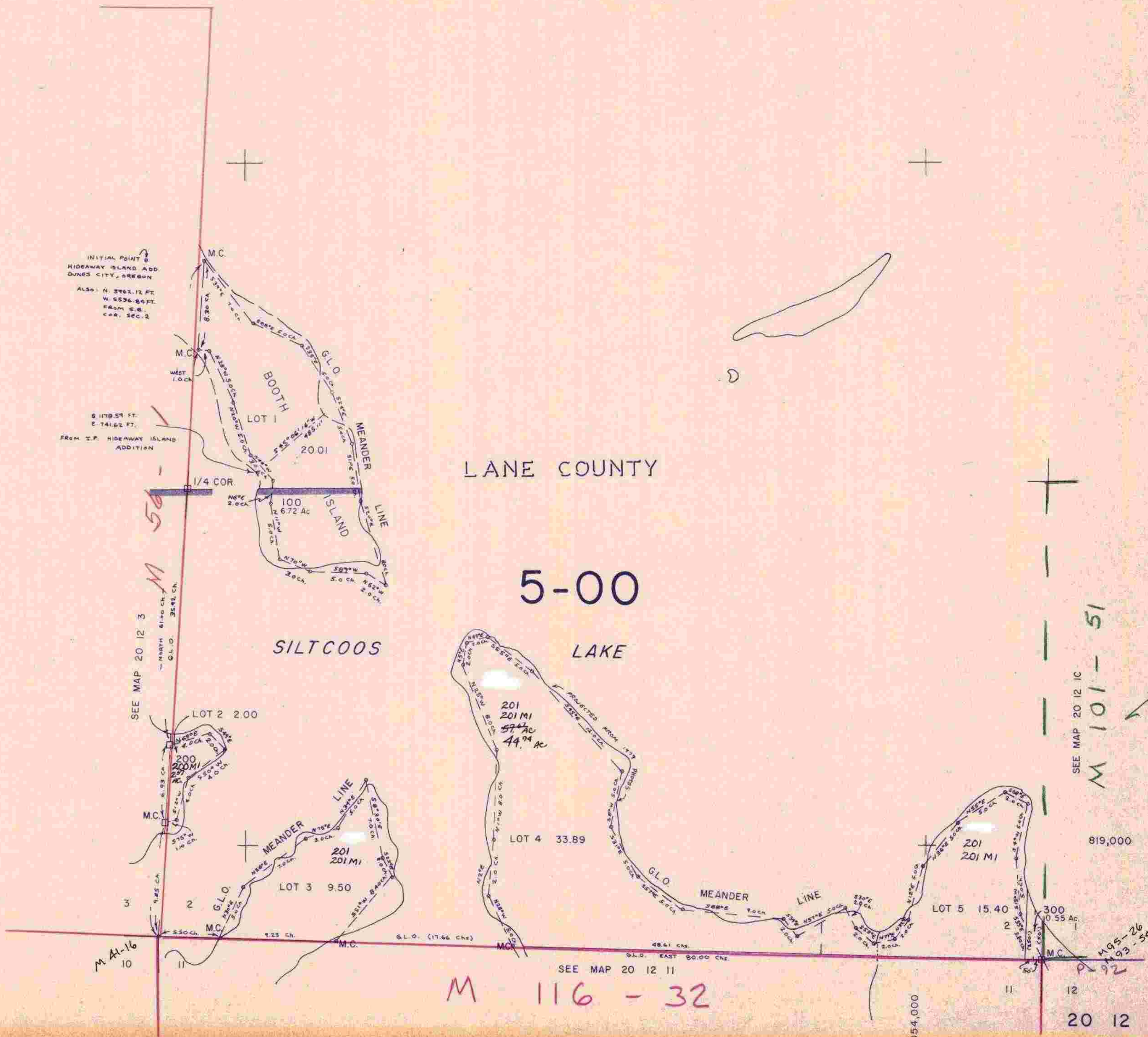


SECTION 2 T.20S. R.12W. W.M.
DOUGLAS COUNTY

20 12 2

THIS MAP WAS PREPARED FOR
ASSESSMENT PURPOSE ONLY.

1" = 400'



INITIAL POINT
HIDEAWAY ISLAND ADD
DUNES CITY, OREGON
ALSO: N. 3962.12 FT.
W. 5536.84 FT.
FROM S.E.
COR. SEC. 2

6 1178.59 FT.
E. 741.62 FT.
FROM I.P. HIDEAWAY ISLAND
ADDITION

SEE MAP 20 12 3
NORTH 6190 CH. 3542 CH.
G.L.O.

M A-16
10

LANE COUNTY

5-00

SILTCOOS

LAKE

SEE MAP 20 12 1C
M 101 - 51

M 116 - 32

819,000

M 92
193-54

20 12 2

1,054,000