

THIS MAP WAS PREPARED FOR  
ASSESSMENT PURPOSE ONLY.

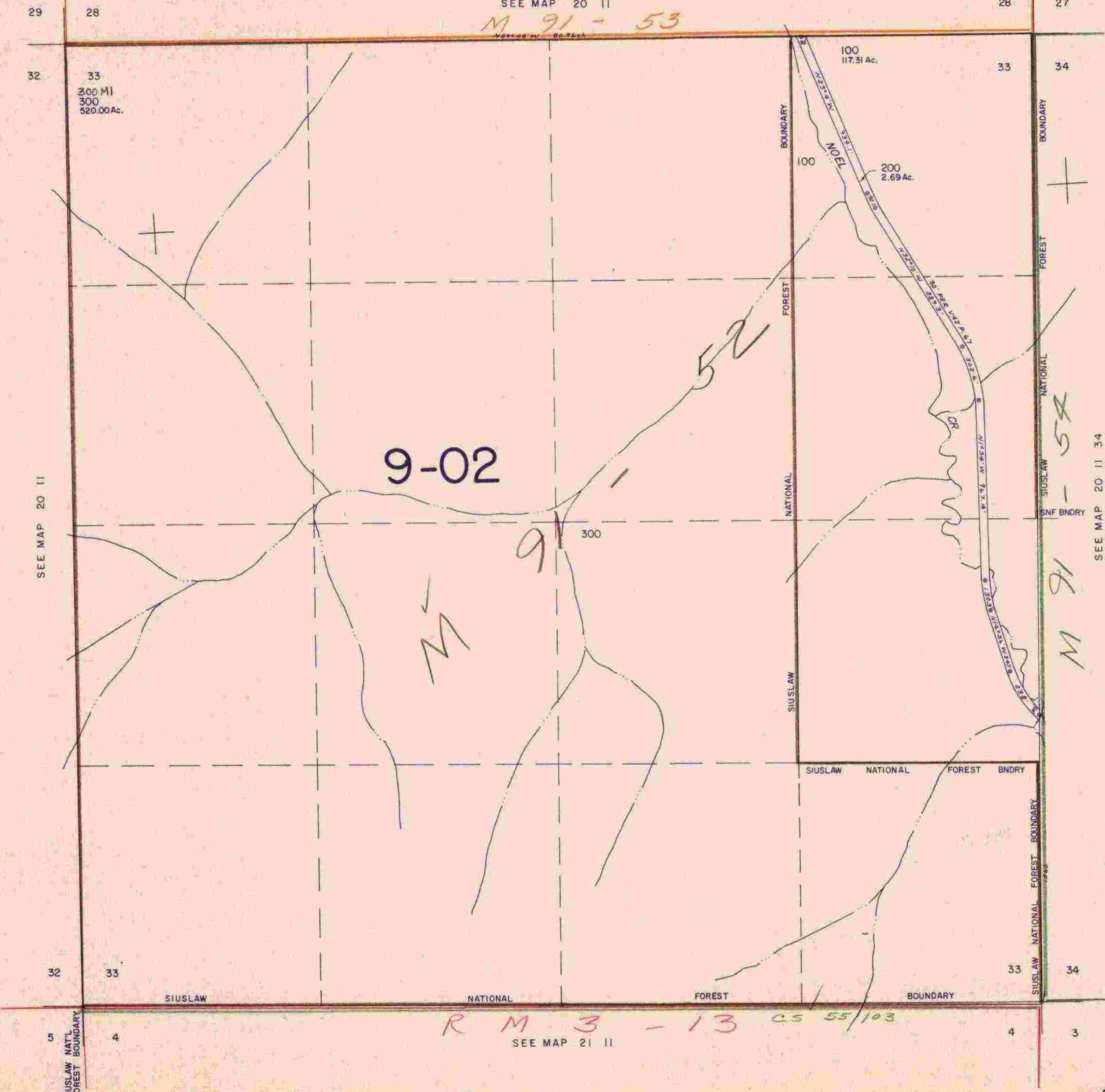
SECTION 33 T.20S. R.11W. W.M.  
DOUGLAS COUNTY

20 11 33

1" = 400'

SEE MAP 20 11

*M 91 - 53*



SEE MAP 20 11

SEE MAP 20 11 34

*R M 3 - 13 CS 55/103*

SEE MAP 21 11

1070,000

790,000

20-11 33

*3/18/21*