

SECTION 31 T.20S. R.11W. W.M.
DOUGLAS COUNTY

20 11 31

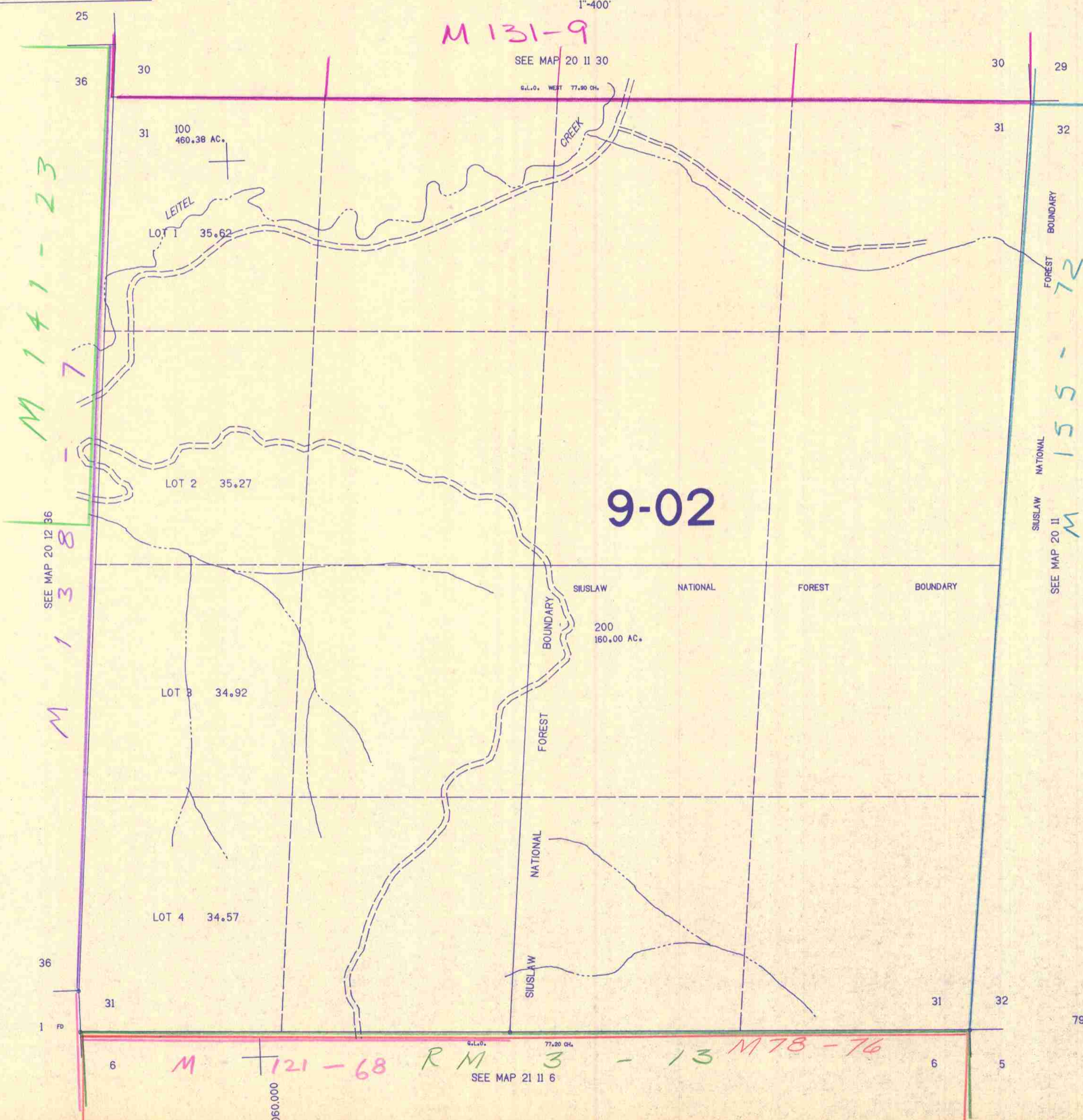
THIS MAP WAS PREPARED FOR
ASSESSMENT PURPOSE ONLY.

1"=400'

M 131-9

SEE MAP 20 11 30

S.L.O. WEST 77.90 CH.



M 141-23

SEE MAP 20 12 36
M 138

M 1

9-02

SIUSLAW NATIONAL FOREST BOUNDARY
SEE MAP 20 11 M 155-72

M 121-68 RM 3-13 M 78-76

SEE MAP 21 11 6

1,060,000

791,000

20 11 31

sls