

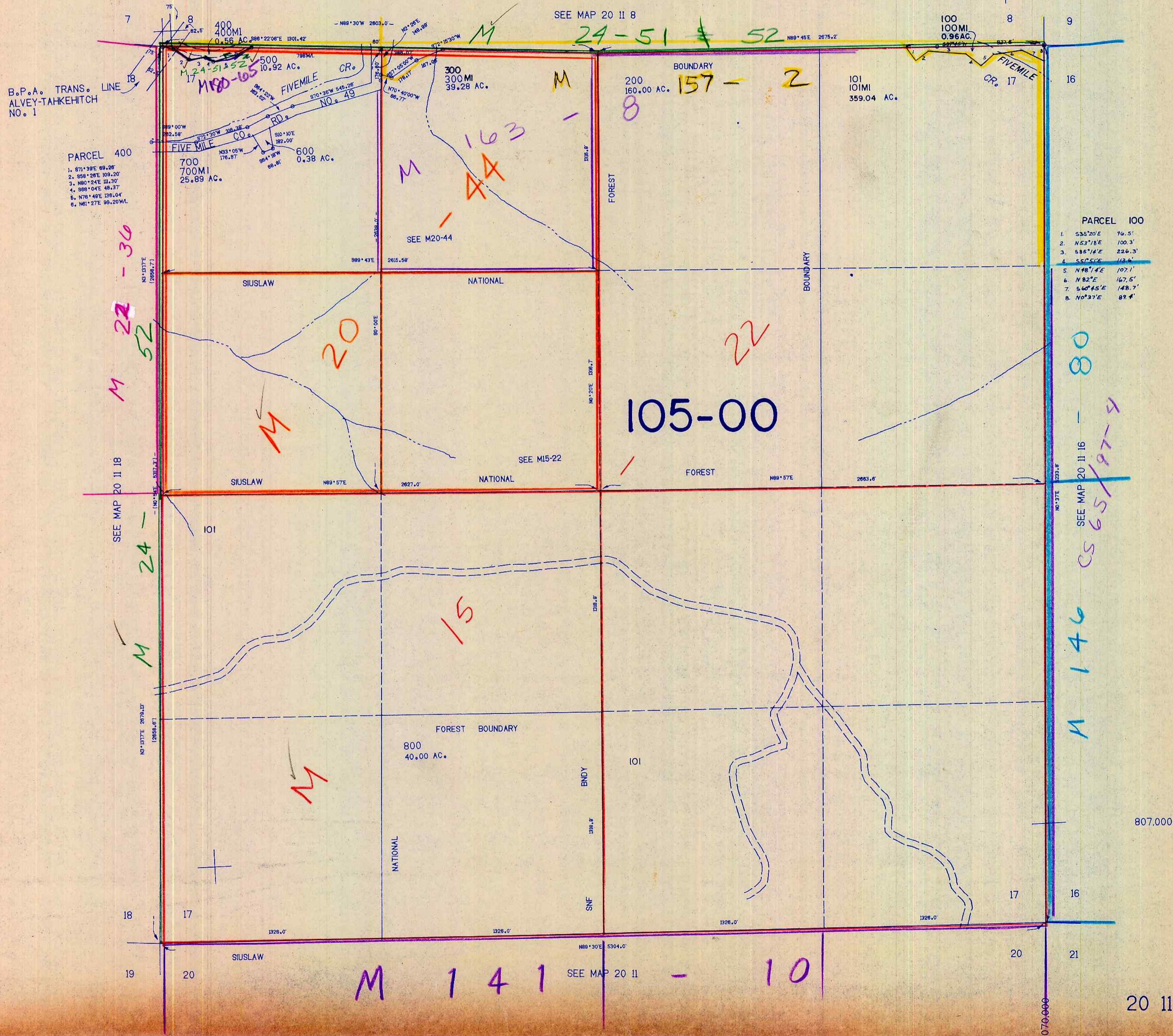
SECTION 17 T.20S. R.11W. W.M.
DOUGLAS COUNTY

REVISED ON
1-5-93

20 11 17

THIS MAP WAS PREPARED FOR
ASSESSMENT PURPOSE ONLY.

1"=400'



PARCEL 400
 1. S71°39'E 89.26'
 2. S58°28'E 109.20'
 3. N80°24'E 111.30'
 4. S88°04'E 49.37'
 5. N78°48'E 138.04'
 6. N81°27'E 99.20'ML

PARCEL 100
 1. S35°20'E 96.5'
 2. N53°18'E 100.3'
 3. S85°14'E 226.3'
 4. S5°51'E 113.6'
 5. N48°14'E 107.1'
 6. N82°E 167.5'
 7. S60°45'E 148.7'
 8. N0°30'E 89.4'

105-00

M 141 SEE MAP 20 11 - 10

M 146 CS 65/97-4

M 22-36
M 24-52
M 24-51

SEE MAP 20 11 8
24-51 & 52

20 11 17

nw
1/93 EC