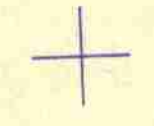
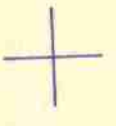


SECTION 6 T.20S. R.11W. W.M.
DOUGLAS COUNTY

20 11 6

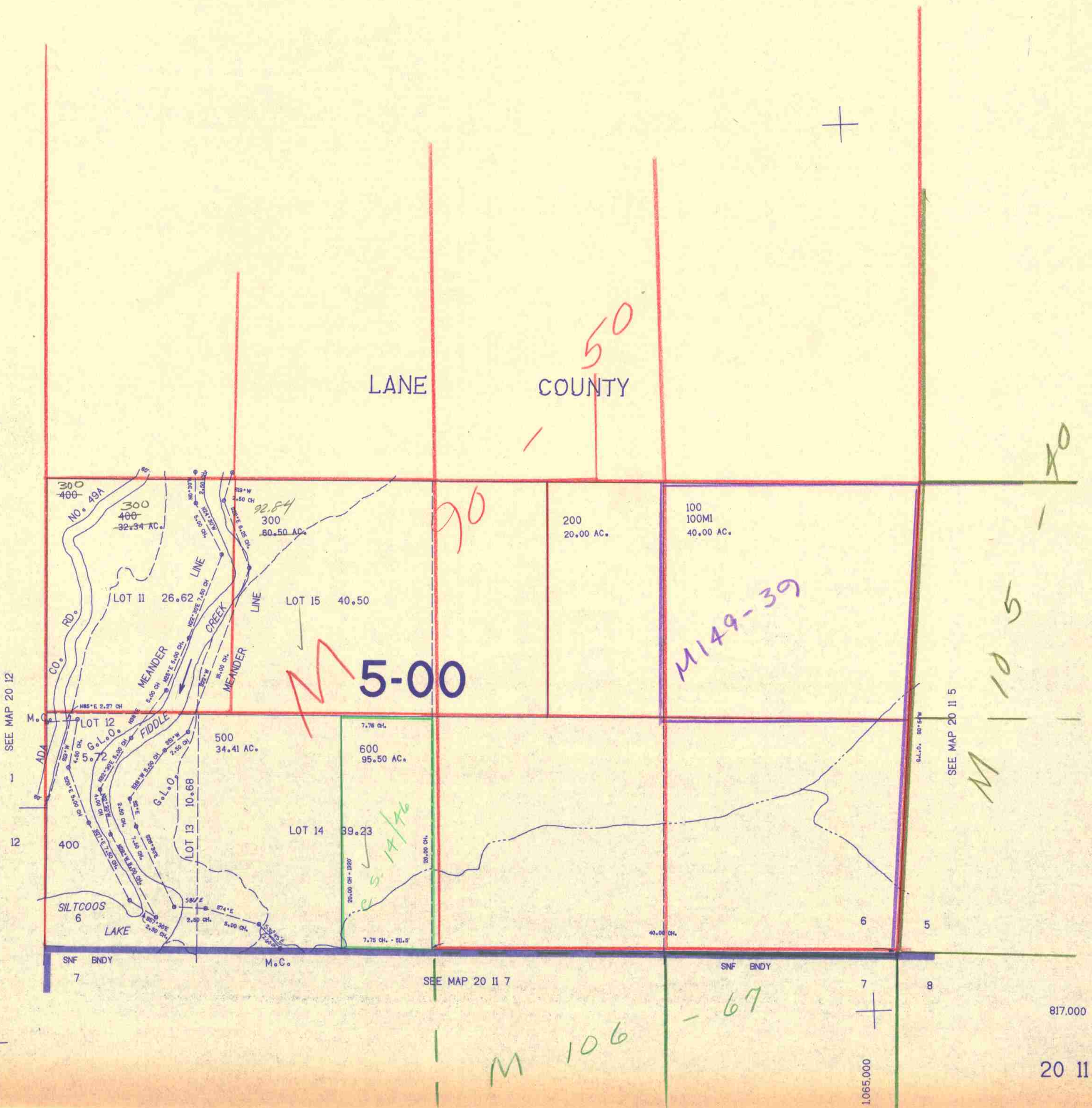
THIS MAP WAS PREPARED FOR
ASSESSMENT PURPOSE ONLY.

1"=400'



LANE COUNTY

RM 1-17
M 88-13



SEE MAP 20 12
1
12

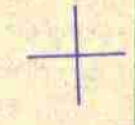
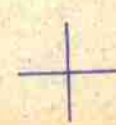
SEE MAP 20 11 5

SEE MAP 20 11 7

1.065,000

817,000

20 11 6



316378