

SECTION 5 T.20S. R.11W. W.M.
DOUGLAS COUNTY

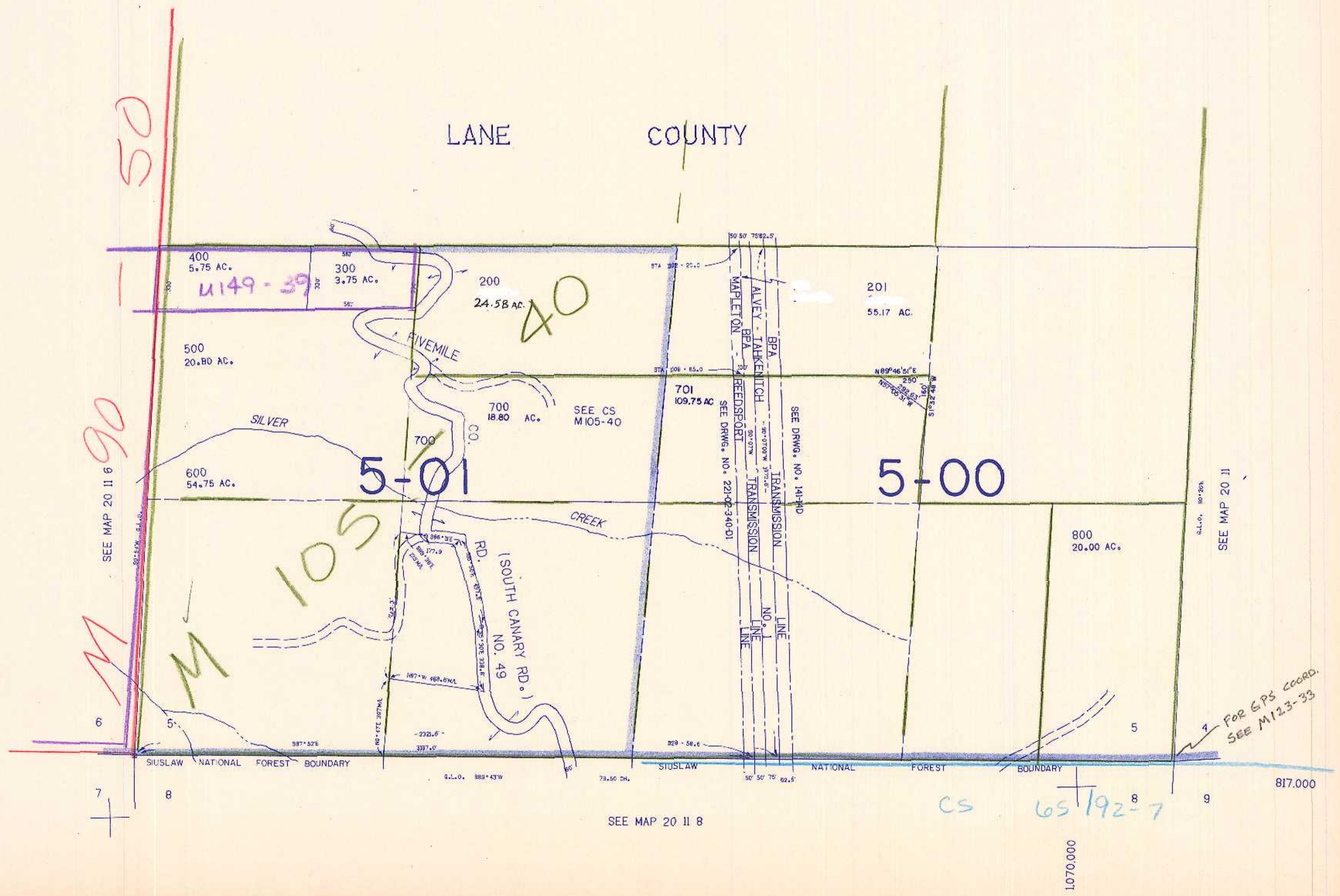
REVISED ON
1-5-96

20 11 5

THIS MAP WAS PREPARED FOR
ASSESSMENT PURPOSE ONLY.

1"=400'

CANCELLED NOS
200M, 201M, 100



90

50

40

M 105

5-01

5-00

CS 65192-7

SEE MAP 20 11 8

SEE MAP 20 11 6

SEE MAP 20 11

FOR GPS COORD.
SEE M123-33

20 11 5

2196 BC