

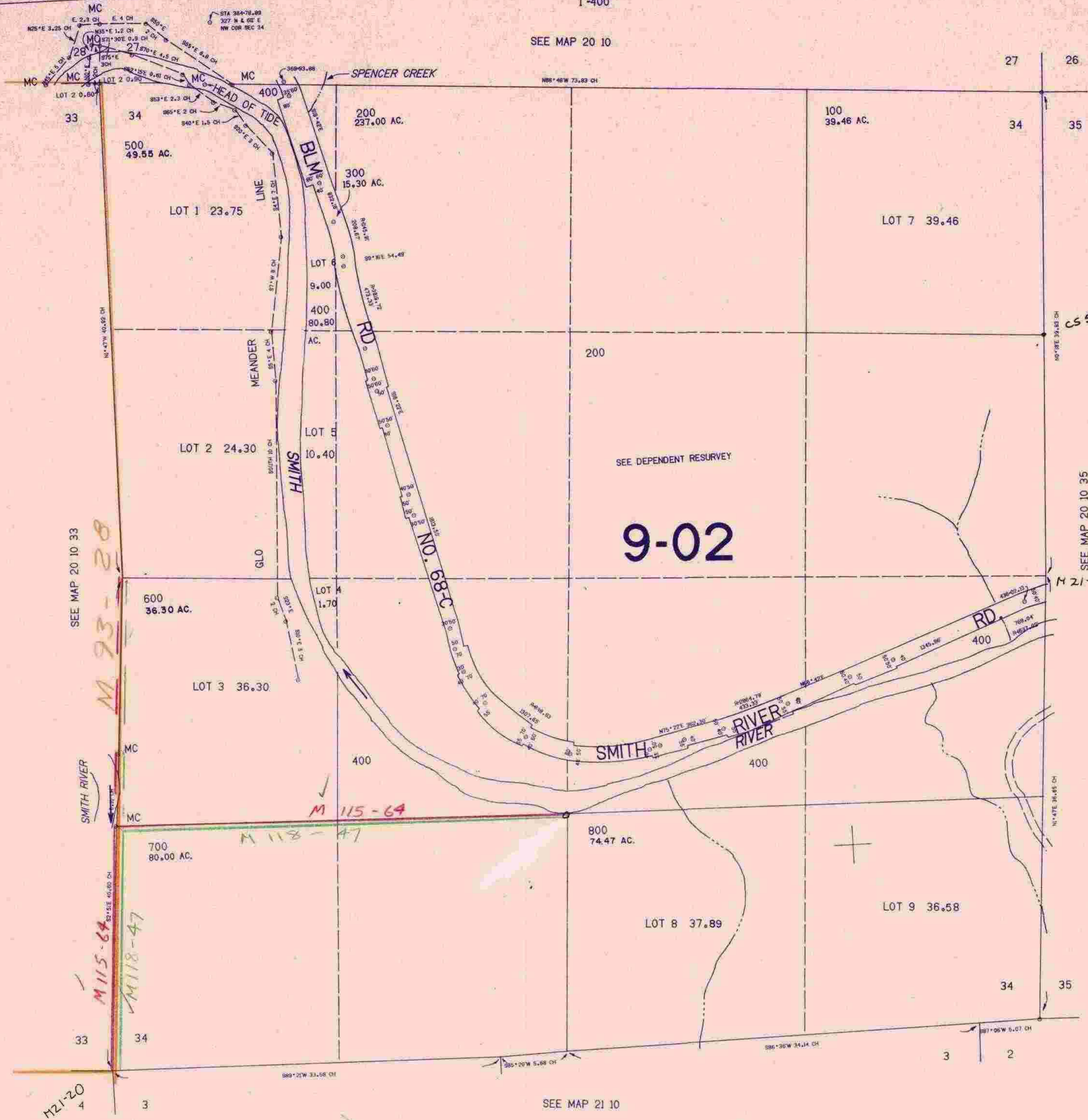
SECTION 34 T.20S. R.10W. W.M.
DOUGLAS COUNTY

20 10 34

1"=400'

THIS MAP WAS PREPARED FOR
ASSESSMENT PURPOSE ONLY.

SEE MAP 20 10



9-02

SEE MAP 20 10 33
M 93-28

M 115-64
M 118-47

CS 53/66-80

SEE MAP 20 10 35
M 21-9

SEE MAP 21 10

20 10 34

110.000

3/23/8