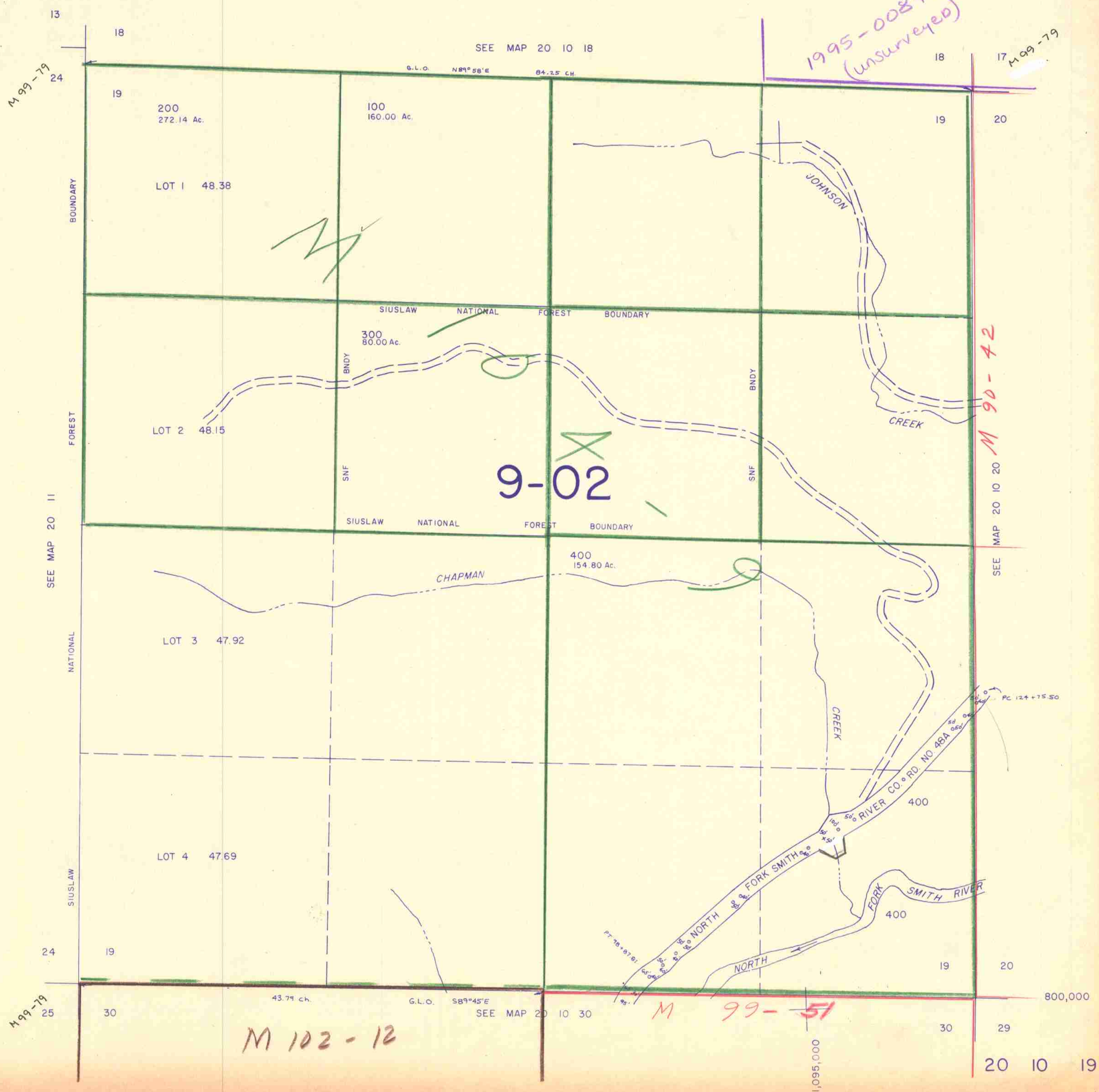


THIS MAP WAS PREPARED FOR ASSESSMENT PURPOSE ONLY.

SECTION 19 T.20S. R.10W. W.M.
DOUGLAS COUNTY

20 10 19

1" = 400'



1995-0089 A+B
(unsurveyed)

9-02

M 90-42

M 102-12

M 99-51

3/23/98