

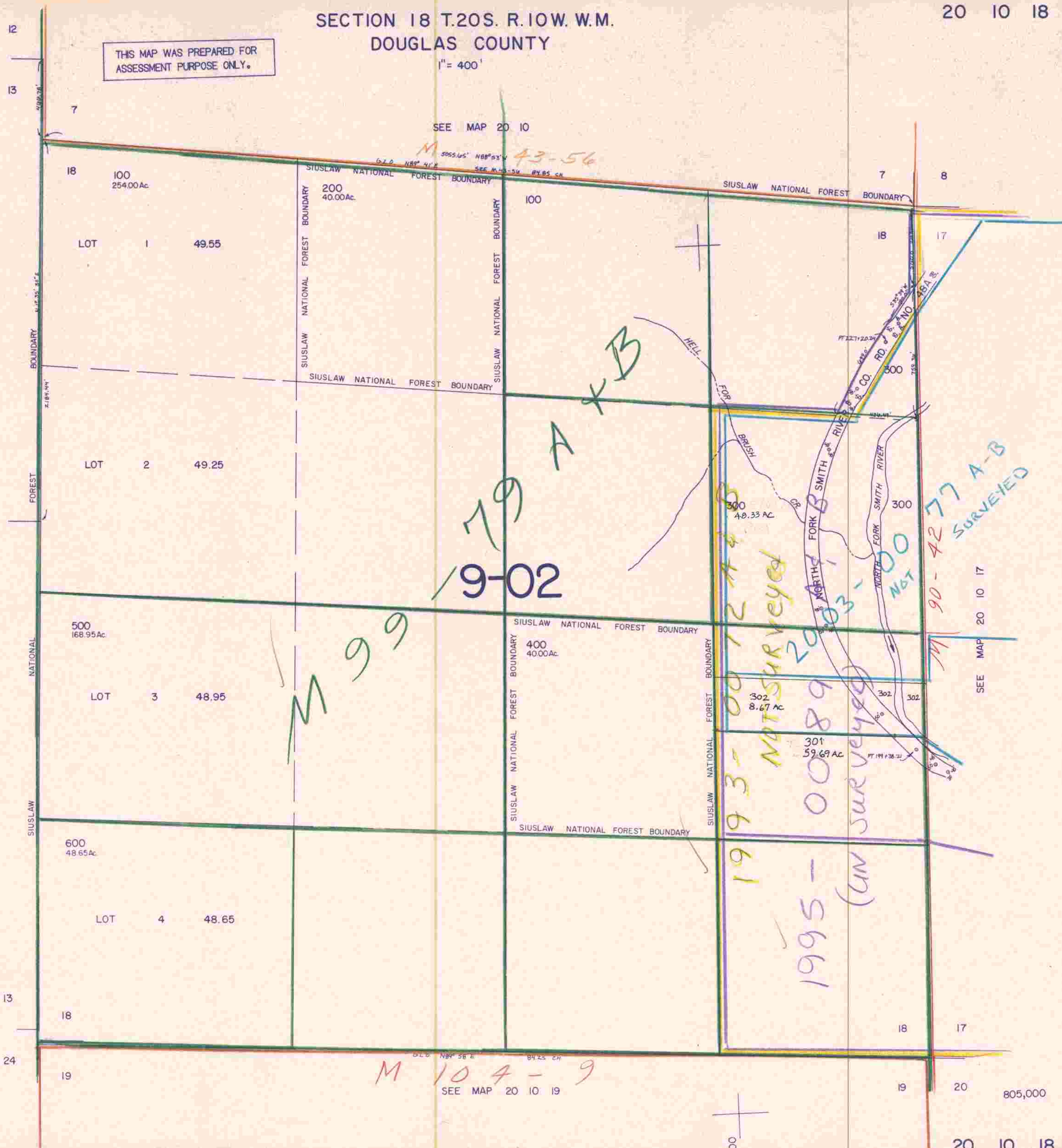
SECTION 18 T.20S. R.10W. W.M.
DOUGLAS COUNTY

1" = 400'

THIS MAP WAS PREPARED FOR
ASSESSMENT PURPOSE ONLY.

SEE MAP 20 10

M 3055.45' N88°53' E 43-56



SEE MAP 20 11

SEE MAP 20 10 17

SEE MAP 20 10 19

805,000

1,095,000

3/10/03