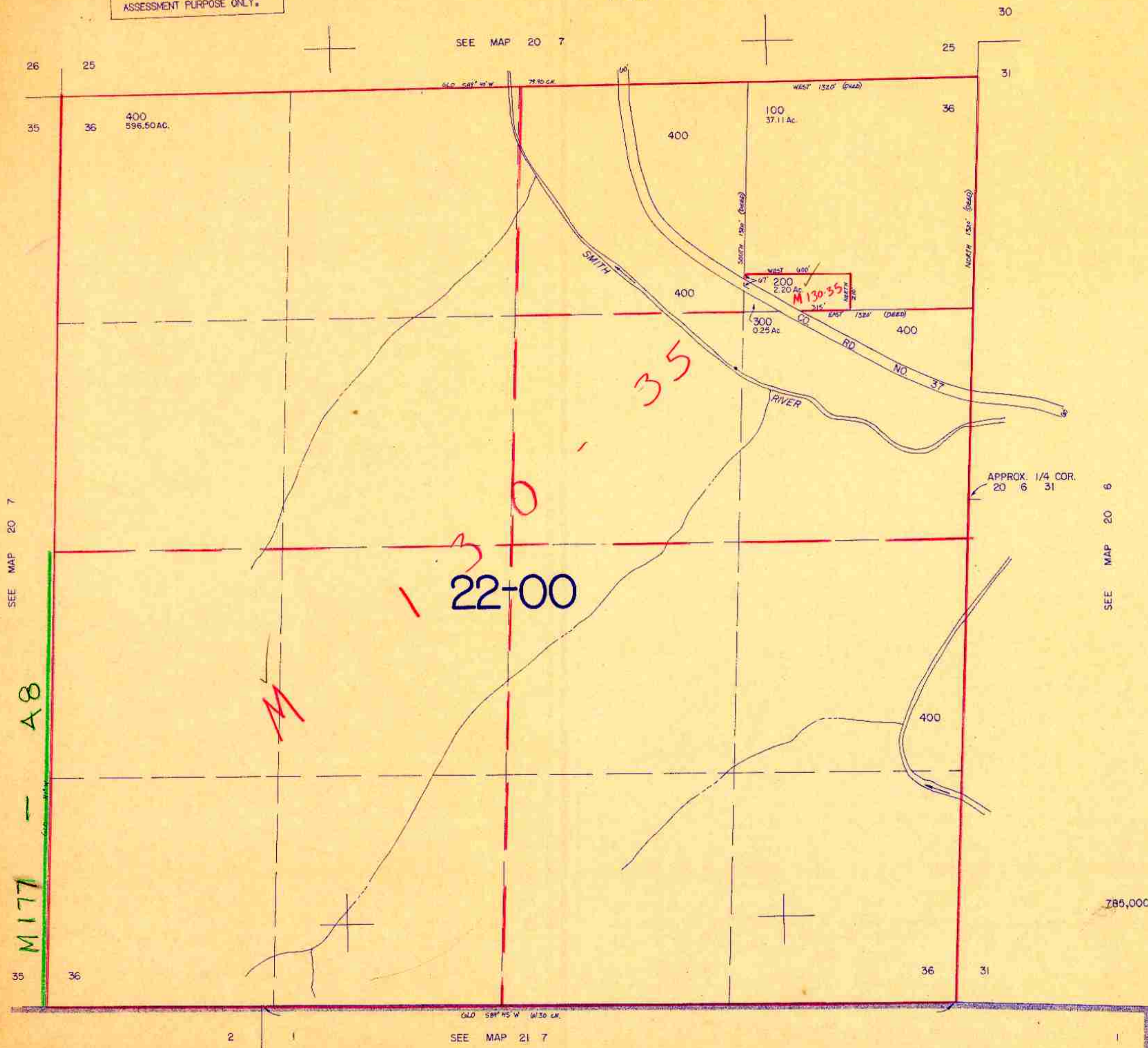


SECTION 36 T.20S. R. 7 W. W.M.
DOUGLAS COUNTY

20 7 36

THIS MAP WAS PREPARED FOR
ASSESSMENT PURPOSE ONLY.

1" = 400'



SEE MAP 20 7

SEE MAP 20 6

M177 - A8

SEE MAP 21 7

1,215,000

20 7 36

6/83