

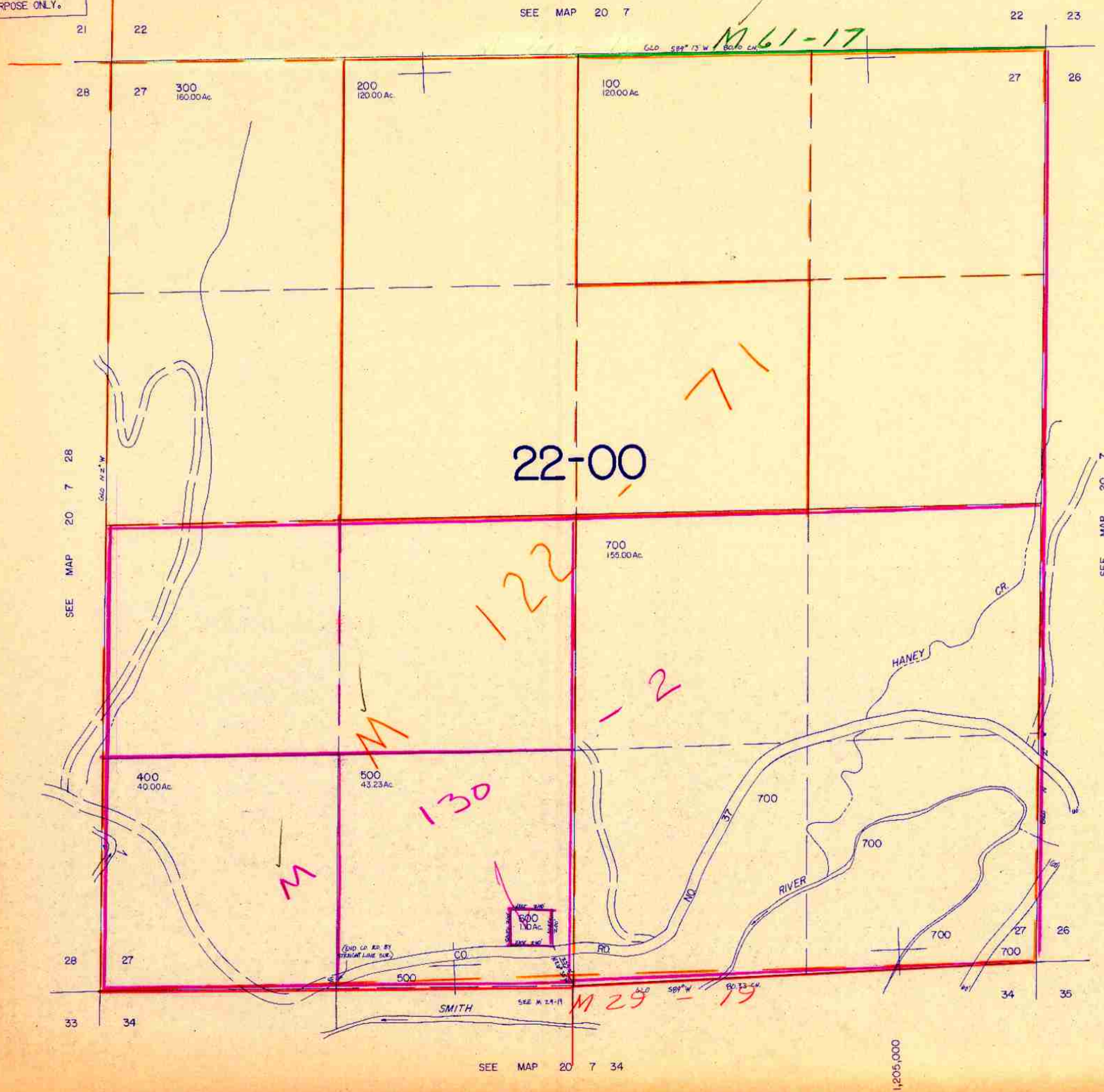
SECTION 27 T.20S. R. 7 W. W.M.
DOUGLAS COUNTY

20 7 27

1" = 400'

SEE MAP 20 7

THIS MAP WAS PREPARED FOR
ASSESSMENT PURPOSE ONLY.



SEE MAP 20 7 34

20 7 27

1,205,000

6/03/28