

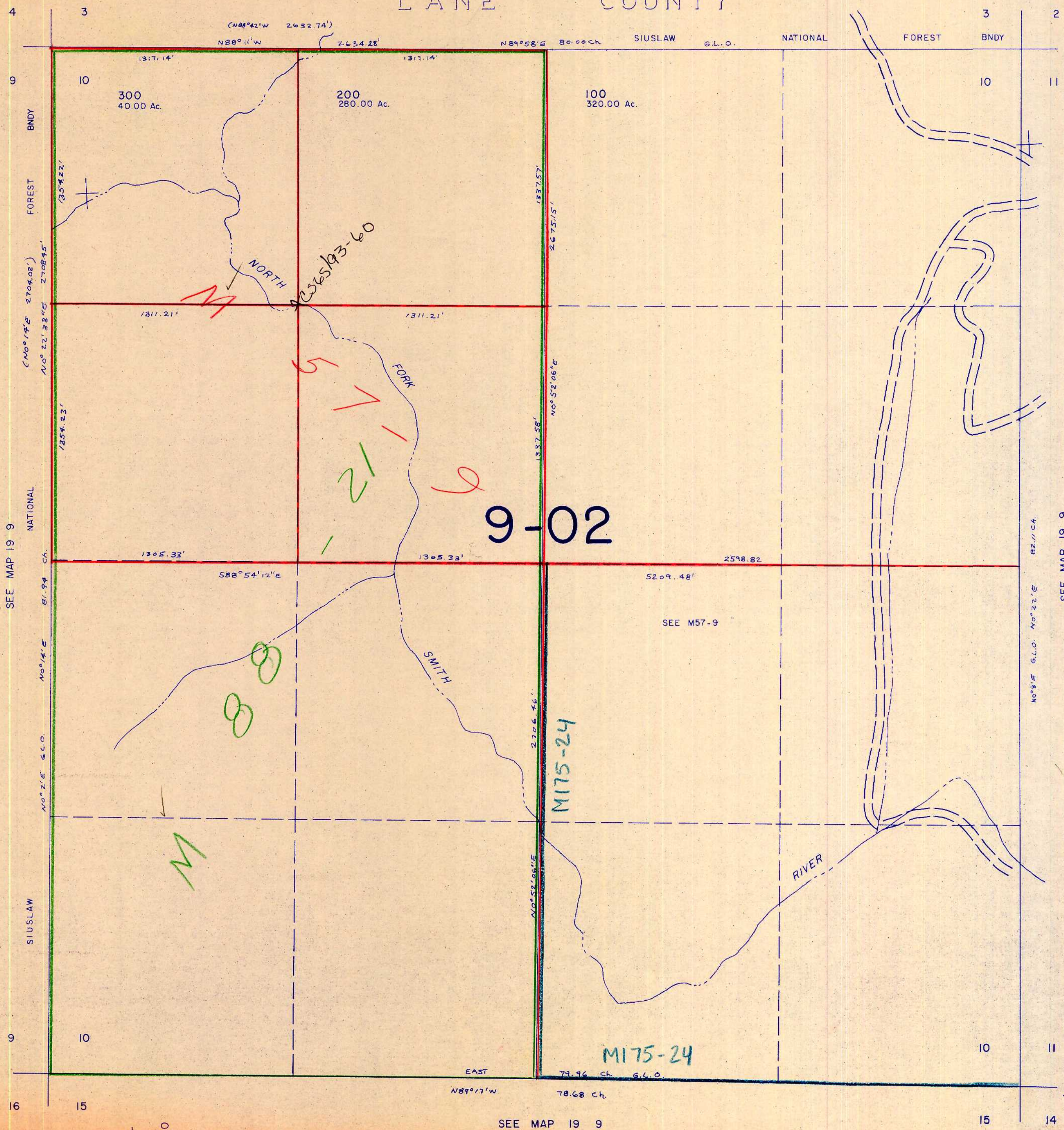
SECTION 10 T.19S. R.9W. W.M.

DOUGLAS COUNTY

1" = 400'

LANE COUNTY

THIS MAP WAS PREPARED FOR ASSESSMENT PURPOSE ONLY.



9-02

M175-24

M175-24

2365193-60

M

21

5

SEE MAP 19 9

SEE MAP 19 9

1,140,000

SEE MAP 19 9

505 check 3/22/08

841,000

3/03 JH